

# KICK

SCOOTER RANGE

MGP ACTION SPORTS  
ESTABLISHED 2002

[www.maddgear.com](http://www.maddgear.com)



# KICK

## INTRO

THE 2019 MADD GEAR KICK SCOOTER RANGE FEATURES A MODEL FOR EVERY RIDING AGE AND ABILITY! WHETHER YOU'RE AN UP AND COMING SHREDDER OR WELL ON YOUR WAY TO PRO STATUS, THE MADD GEAR KICK RANGE OF SCOOTERS HAS YOU COVERED AND IS BACKED BY MADD GEAR'S REPUTATION FOR QUALITY.

WITH 9 GENERATIONS OF PRODUCT KNOWLEDGE AND TESTING INFUSED INTO ITS DNA, THE MADD GEAR KICK SCOOTER RANGE COMES DIALED STRAIGHT OUT OF THE BOX AND READY TO TACKLE ANYTHING FROM YOUR RIDE TO SCHOOL TO RIPPING DOWN AT YOUR LOCAL SKATE PARK WITHOUT BREAKING A SWEAT!

WITH COMPONENTS HAND SELECTED FOR THEIR PERFORMANCE AND DURABILITY, THE MADD GEAR KICK SCOOTER RANGE IS READY TO TAKE YOUR PROGRESSION TO THE NEXT LEVEL AND HAVE YOU BEATING YOUR FRIENDS AT S.C.O.O.T IN NO TIME!

### COPIERS BEWARE:

in countries where Madd Gear products are sold, Madd Gear has registered and pending trademarks as well as reputational rights. In some countries there may also be Registered Design and Patent rights applying. Madd Gear protects this Intellectual Property vigorously. For more information, contact Madd Gear head office.

All specifications and details contained in this Catalogue are subject to change without notice. Errors and omissions accepted. All headtube angles can vary by 0.5 degree + or -.

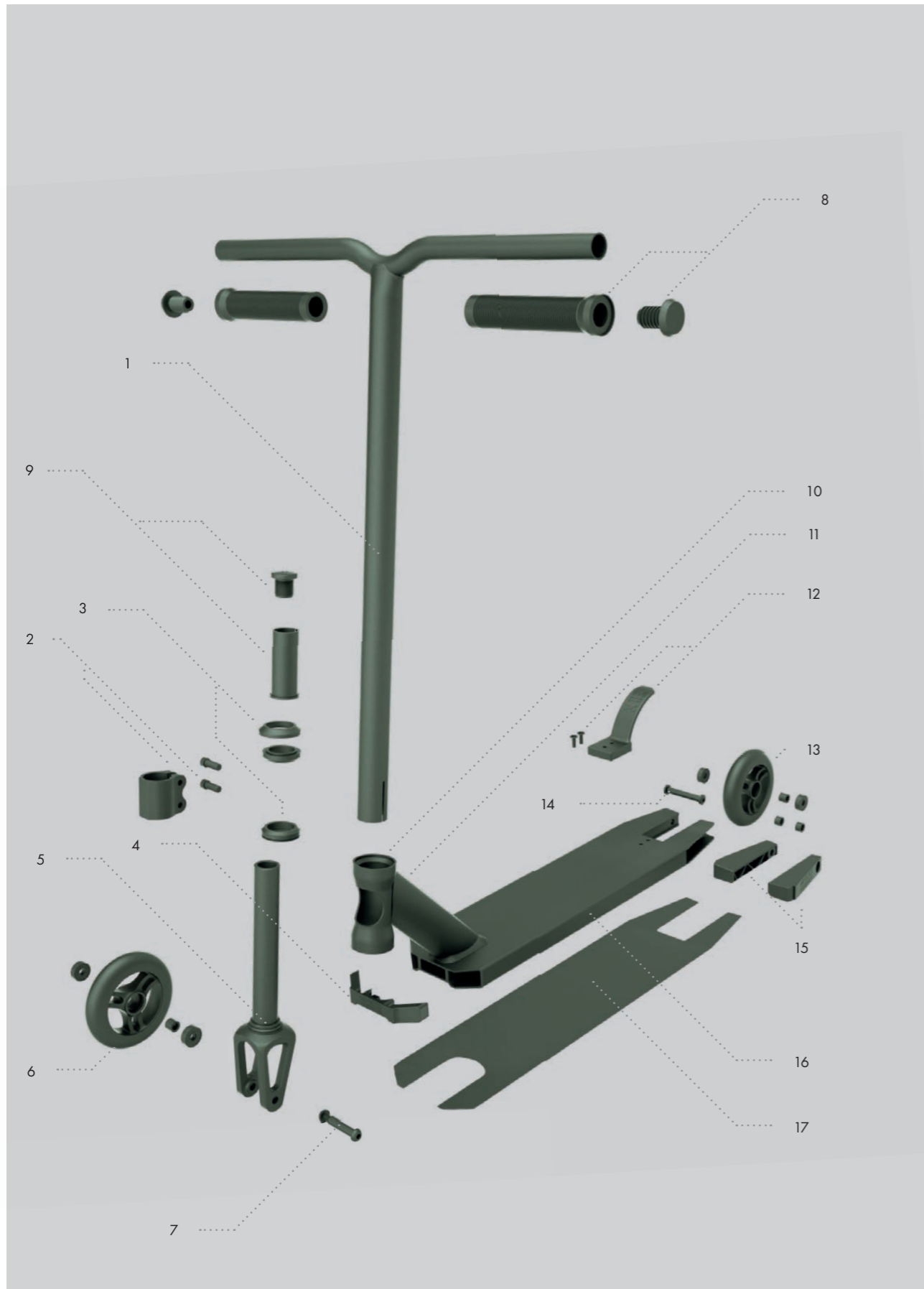


## CONTENTS

### KICK SCOOTER RANGE

---

COMPONENTS	4-5
COMPARISON	6-7
RASCAL	8-13
PRO	14-19
EXTREME	22-25
KAOS	28-33



## GENERAL COMPONENTS

- |  |  |  |   |
|--|--|--|---|
| 1 BAR<br>STANDARD DIAMETER<br>HIGH-GRADE CR-MO                             | 2 CLAMP<br>FORGED ALUMINUM<br>WITH BOLTS & WASHERS | 3 INTEGRATED HEADSET<br>IHC WITH TOP CAP             | 4 FRONT DECK BLOCK<br>HIGH-DENSITY<br>PP 4" OR 4.5" |
| 5 IHC FORK<br>THREADLESS HIGH-TEN<br>AND ALLOY                             | 6 FRONT WHEEL<br>WITH BEARINGS<br>AND SPACER       | 7 FRONT AXLE<br>MALE AND FEMALE                      | 8 GRIPS<br>WITH NYLON BAR-ENDS                      |
| 9 IHC BOLT<br>WITH ALLOY SHIM  | 10 HEADTUBE<br>INTEGRATED AND<br>WITH CUTOUT       | 11 MG™ EXTRUDED<br>DOWNTUBE<br>(WITH WATER DECAL)    | 12 MG™ V2 COMPOSITE<br>BLITZ BRAKE<br>AND HARDWARE  |
| 13 REAR WHEEL<br>WITH BEARINGS<br>AND SPACER                               | 14 REAR AXLE<br>MALE AND FEMALE<br>WITH SPACERS    | 15 REAR DECK BLOCKS<br>HIGH-DENSITY<br>PP 4" OR 4.5" |   |
| 16 MG™ HEAT TREATED<br>AND INTERNAL FLUTED<br>FLAT DECK<br>WITH 3° CONCAVE | 17 GRIP TAPE<br>FULL DECK<br>OR SPLIT GRIP         |  |   |



# KICK

## RASCAL

## PRO



## EXTREME

## KOAS



GRIPS

MG SOFT SQUID GRIPS WITH INTERNAL BAR-ENDS

130MM MG SOFT TPR SWIRLS GRIND GRIPS WITH NYLON BAR-ENDS

BAR

MG LOW RISER 16.5" W X 18" H (41.9 CM W X 45.7 CM H) 4031 JAPANESE CHROMOLY / STANDARD DIAMETER

MG T-BAR 18.5" W X 22" H (46.9 CM W X 55.8 CM H) 4031 JAPANESE CHROMOLY / STANDARD DIAMETER

CLAMP

6061 ALUMINUM EXTREME DOUBLE

6061 ALUMINUM EXTREME DOUBLE

HEADSET

THREADLESS INTEGRATED WITH SEALED BEARING

THREADLESS INTEGRATED WITH SEALED BEARING

FORK

HIGH-TEN IHC THREADLESS

6061 ALUMINUM IHC THREADLESS

WHEELS

100MM NYLON CORES WITH MG HIGH-SPEED POLYURETHANE FORMULA

110MM CNC ALLOY CORES WITH MG HIGH-SPEED POLYURETHANE FORMULA

BEARINGS

ABEC 5 HIGH-SPEED CHROME BEARINGS

ABEC 7 HIGH-SPEED CHROME BEARINGS

DECK

KICK SERIES 6061 ALUMINUM T4 & T6 HEAT TREATED 17.5" L X 4" W DECK WITH INTEGRATED DOWNTUBE

KICK SERIES 6061 ALUMINUM T4 & T6 HEAT TREATED 19" L X 4" W DECK WITH INTEGRATED DOWNTUBE AND HEADTUBE CUTOUT

GRIP TAPE

MG KICK RASCAL FULL DECK

MG KICK PRO FULL DECK

BRAKE

V2 MG COMPOSITE BLITZ

V2 MG COMPOSITE BLITZ

FINISH

DURABLE POWDER COATED FADE PAINT

DURABLE POWDER COATED FADE PAINT

RECOMMENDED USER AGE / WEIGHT

4 YEARS & UP  
MAX WEIGHT: 60KG / 132LBS

6 YEARS & UP  
WEIGHT RANGE: 36-100KG / 80-220LBS

130MM MG SOFT TPR SWIRLS GRIND GRIPS WITH NYLON BAR-ENDS

150MM MG SOFT TPR SWIRLS GRIND GRIPS WITH NYLON BAR-ENDS

MG LOW RISER 20.5" W X 23" H (52.0 CM W X 58.4 CM H) 4031 JAPANESE CHROMOLY / STANDARD DIAMETER

MG Y-BAR 22.5" W X 24" H (57.1 CM W X 60 CM H) 4031 JAPANESE CHROMOLY / STANDARD DIAMETER

6061 ALUMINUM EXTREME DOUBLE

6061 ALUMINUM EXTREME DOUBLE

THREADLESS INTEGRATED WITH SEALED BEARING

THREADLESS INTEGRATED WITH SEALED BEARING

6061 ALUMINUM IHC THREADLESS

6061 ALUMINUM IHC THREADLESS

110MM CNC TRIPLE SPOKED ALLOY CORES WITH MG HIGH-SPEED POLYURETHANE FORMULA

120MM CNC ALLOY CORES WITH MG HIGH-SPEED POLYURETHANE FORMULA

ABEC 7 HIGH-SPEED CHROME BEARINGS

ABEC 9 HIGH-SPEED CHROME BEARINGS

KICK SERIES 6061 ALUMINUM T4 & T6 HEAT TREATED 19.5" L X 4.5" W DECK WITH INTEGRATED DOWNTUBE AND HEADTUBE CUTOUT

KICK SERIES 6061 ALUMINUM T4 & T6 HEAT TREATED 20" L X 4.5" W DECK WITH INTEGRATED DOWNTUBE AND HEADTUBE CUTOUT

MG KICK EXTREME FULL DECK

MG KICK KOAS SPLIT DECK

V2 MG COMPOSITE BLITZ

V2 MG COMPOSITE BLITZ

DURABLE MG HYDROCOATED PAINT

DURABLE ANODIZED COATING

8 YEARS & UP  
WEIGHT RANGE: 36-100KG / 80-220LBS

8 YEARS & UP  
WEIGHT RANGE: 36-100KG / 80-220LBS

GRIPS

BAR

CLAMP

HEADSET

FORK

WHEELS

BEARINGS

DECK

GRIP TAPE

BRAKE

FINISH

RECOMMENDED USER AGE/WEIGHT

# KICK

## RASCAL

THE MADD GEAR KICK RASCAL STUNT SCOOTER IS DESIGNED SPECIFICALLY WITH THE YOUNGER RIDER IN MIND. WITH SHORTER DECK AND LOWER BARS, THE KICK RASCAL IS PERFECTLY BALANCED AND EFFORTLESS TO CONTROL FOR RIDERS 4 YEARS AND UP.

WITH NINE GENERATIONS WORTH OF TECHNOLOGY AND PRODUCT TESTING FROM THE WORLD'S BEST PRO RIDERS, THE MADD GEAR KICK RASCAL STUNT SCOOTER WILL LEVEL UP YOUR PROGRESSION AND HAVE YOU LEARNING NEW TRICKS IN NO TIME! HAND SELECTED MATERIALS AND COMPONENTS ARE USED FOR THE PERFECT BALANCE BETWEEN RIDE QUALITY, DURABILITY AND PERFORMANCE IN A DIALED PACKAGE STRAIGHT OUT OF THE BOX.

STEP UP YOUR GAME WITH THE MADD GEAR KICK RASCAL, WEIGHING JUST 2.94KG / 6.5LBS.

[www.maddgear.com](http://www.maddgear.com)



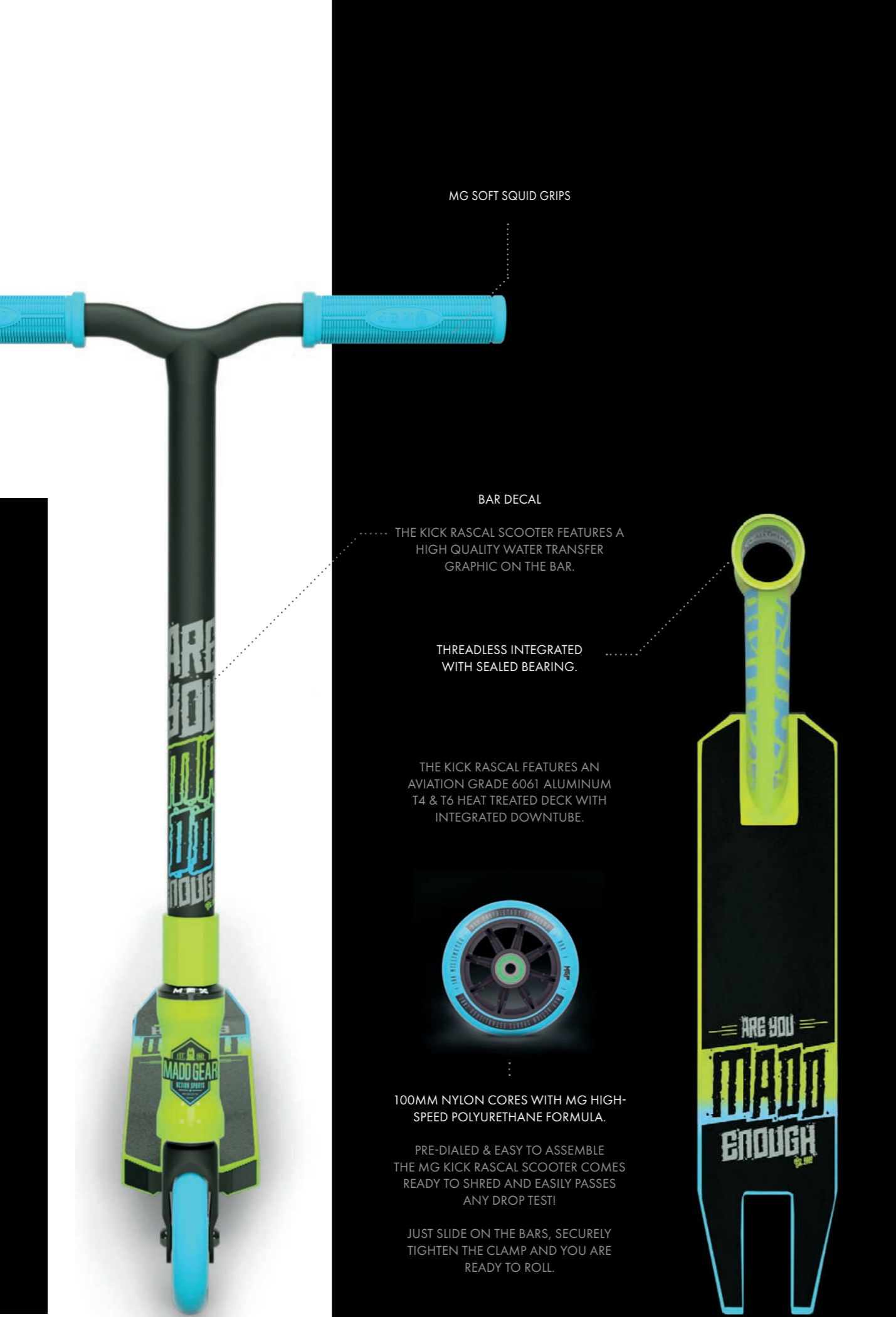
### FEATURES

- MG SOFT SQUID GRIPS WITH INTERNAL BAR-ENDS
- 6061 ALUMINUM EXTREME DOUBLE CLAMP
- 100MM NYLON CORES WITH MG HIGH-SPEED POLYURETHANE FORMULA
- ABEC 5 HIGH-SPEED CHROME BEARINGS
- ALUMINUM 17.5" LONG X 4" WIDE DECK WITH INTEGRATED DOWNTUBE
- DURABLE POWDER COATED FADE PAINT

COMPLETE WEIGHT: 2.94 KG / 6.5 LBS



FOR AGES 4+ YEARS | MAX WEIGHT: 60KG (132 LBS)



MG SOFT SQUID GRIPS

BAR DECAL

THE KICK RASCAL SCOOTER FEATURES A HIGH QUALITY WATER TRANSFER GRAPHIC ON THE BAR.

THREADLESS INTEGRATED WITH SEALED BEARING.

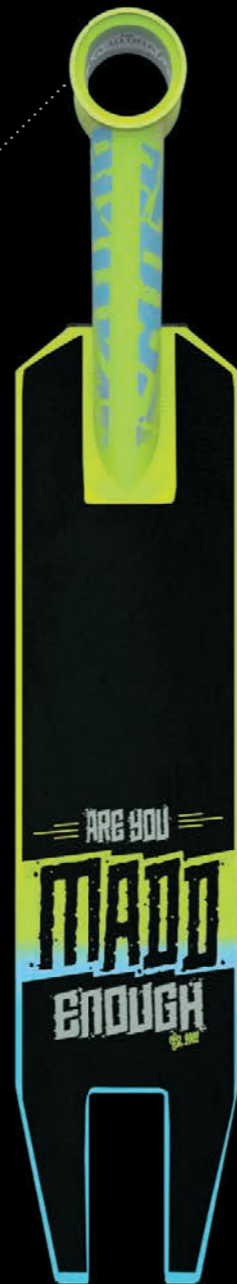
THE KICK RASCAL FEATURES AN AVIATION GRADE 6061 ALUMINUM T4 & T6 HEAT TREATED DECK WITH INTEGRATED DOWNTUBE.



100MM NYLON CORES WITH MG HIGH-SPEED POLYURETHANE FORMULA.

PRE-DIALED & EASY TO ASSEMBLE THE MG KICK RASCAL SCOOTER COMES READY TO SHRED AND EASILY PASSES ANY DROP TEST!

JUST SLIDE ON THE BARS, SECURELY TIGHTEN THE CLAMP AND YOU ARE READY TO ROLL.



# SPECIFICATIONS AND DETAILS



## COMPONENTS

### GRIPS

MG SOFT SQUID GRIPS WITH INTERNAL BAR-ENDS

### BAR

MG LOW RISER 16.5" W X 18" H (41.9 CM W X 45.7 CM H) 4031 JAPANESE CHROMOLY / STANDARD DIAMETER

### CLAMP

6061 ALUMINUM EXTREME DOUBLE

### HEADSET

THREADLESS INTEGRATED WITH SEALED BEARING

### FORK

HIGH-TEN IHC THREADLESS

### WHEELS

100MM NYLON CORE WITH MATTE MG PROPRIETARY POLYURETHANE BLEND

### BEARINGS

ABEC 5 HIGH-SPEED CHROME BEARINGS

### DECK

KICK SERIES 6061 ALUMINUM T4 & T6 HEAT TREATED 17.5" L X 4" W DECK WITH INTEGRATED DOWNTUBE

### GRIP TAPE

MG KICK RASCAL FULL DECK

### BRAKE

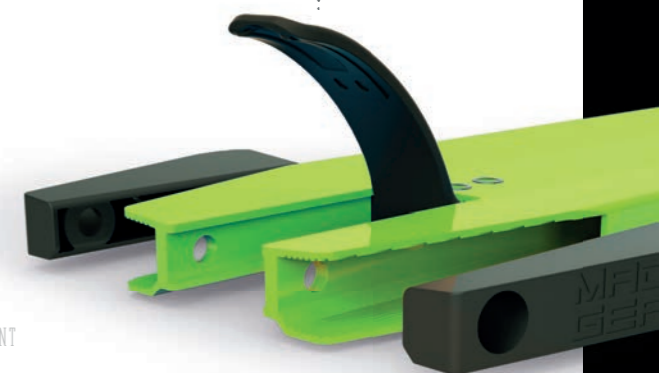
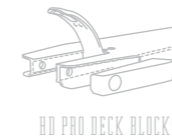
V2 MG COMPOSITE BLITZ BRAKE

### FINISH

DURABLE POWDER COATED FADE PAINT

### RECOMMENDED AGE & WEIGHT

4 YEARS & UP  
MAX WEIGHT: 60KG / 132LBS



FIND MORE INFORMATION ON PAGE 36.

## RASCAL COLOUR RANGE



BLUE - GREEN



GREEN - BLUE



RED - BLUE



TURQUOISE - PINK



## DIMENSIONS

### PRODUCT

LENGTH: 24.0" / 61.0 CM  
 WIDTH: 16.5" / 41.9 CM  
 HEIGHT: 27.0" / 68.6 CM

### COLOUR BOX

LENGTH: 24.5" / 62.23 CM  
 WIDTH: 4.5" / 11.43 CM  
 HEIGHT: 16.75" / 42.55 CM

### OUTER CARTON

LENGTH: 24.8" / 63.00 CM  
 WIDTH: 9.5" / 24.00 CM  
 HEIGHT: 23.6" / 60.00 CM



MGP ACTION SPORTS - ESTABLISHED 2002

# KICK

## PRO

THE MADD GEAR KICK PRO STUNT SCOOTER IS DESIGNED FOR RIDERS 6 YEARS AND UP STRIKING A PERFECT BALANCE BETWEEN WEIGHT AND DURABILITY IN THE IDEAL SIZE TO TAKE ANY YOUNG SHREDDERS RIDING TO THE NEXT LEVEL.

EVERY COMPONENT OF THE MADD GEAR KICK PRO SCOOTER WAS DESIGNED TO PRODUCE THE MOST BALANCED AND SMOOTHEST ROLLING KICK PRO SCOOTER EVER! WHETHER YOU'RE JUST RIDING TO SCHOOL OR RIPPING DOWN AT YOUR LOCAL SKATEPARK, THE MADD GEAR KICK PRO STUNT SCOOTER IS DESIGNED TO STAND UP TO THE DEMANDS OF TODAY'S ASPIRING PRO RIDERS.

WEIGHING JUST 3.1 KG / 6.9 LBS FOR THE COMPLETE SCOOTER.

[www.maddgear.com](http://www.maddgear.com)



### FEATURES

- 130MM MG SOFT TPR SWIRLS GRIND GRIPS WITH NYLON BAR-ENDS
- 6061 ALUMINUM IHC THREADLESS FORK
- 110MM CNC FIVE SPOKE ALLOY CORES WITH MG HIGH-SPEED POLYURETHANE FORMULA
- ABEC 7 HIGH-SPEED CHROME BEARINGS
- ALUMINUM 19" LONG X 4" WIDE DECK WITH INTEGRATED DOWNTUBE & HEADTUBE CUTOUT
- DURABLE POWDER COATED FADE PAINT

COMPLETE WEIGHT: 3.13 KG / 6.9 LBS



FOR AGES 6+ YEARS | WEIGHT RANGE: 36-100KG (80-220 LBS)





2-TONE SWIRL DESIGN

BAR DECAL

THE KICK PRO SCOOTER FEATURES A HIGH QUALITY WATER TRANSFER GRAPHIC ON THE BAR.

THREADLESS INTEGRATED WITH SEALED BEARING.

THE KICK PRO FEATURES AN AVIATION GRADE 6061 ALUMINUM T4 & T6 HEAT TREATED DECK WITH INTEGRATED DOWNTUBE AND HEADTUBE CUTOUT.



110MM CNC ALLOY CORES WITH MG HIGH-SPEED POLYURETHANE FORMULA.

PRE-DIALED & EASY TO ASSEMBLE THE MG KICK PRO SCOOTER COMES READY TO SHRED AND EASILY PASSES ANY DROP TEST!

JUST SLIDE ON THE BARS, SECURELY TIGHTEN THE CLAMP AND YOU ARE READY TO ROLL.



# SPECIFICATIONS AND DETAILS



## COMPONENTS

### GRIPS

130MM MG SOFT TPR SWIRLS GRIND GRIPS WITH NYLON BAR-ENDS

### BAR

MG T-BAR 18.5" W X 22" H (46.9 CM W X 55.8 CM H) 4031 JAPANESE CHROMOLY / STANDARD DIAMETER

### CLAMP

6061 ALUMINUM EXTREME DOUBLE

### HEADSET

THREADLESS INTEGRATED WITH SEALED BEARING

### FORK

6061 ALUMINUM IHC THREADLESS

### WHEELS

110MM CNC ALLOY CORES WITH MG HIGH-SPEED POLYURETHANE FORMULA

### BEARINGS

ABEC 7 HIGH-SPEED CHROME BEARINGS

### DECK

KICK SERIES 6061 ALUMINUM T4 & T6 HEAT TREATED 19" L X 4" W DECK WITH INTEGRATED DOWNTUBE AND HEADTUBE CUTOUT

### GRIP TAPE

MG KICK PRO FULL DECK

### BRAKE

V2 MG COMPOSITE BLITZ BRAKE

### FINISH

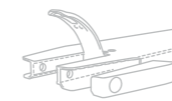
DURABLE POWDER COATED FADE PAINT

### RECOMMENDED AGE & WEIGHT

6 YEARS & UP  
WEIGHT RANGE: 36-100KG / 80-220LBS



INTERNAL FLUTING



HD PRO DECK BLOCKS



ROBOTIC WELDING



T6 HEAT TREATMENT



FIND MORE INFORMATION ON PAGE 36.

## PRO COLOUR RANGE



BLUE - GREEN



GREEN - BLUE



RED - BLUE



TURQUOISE - PINK



BLACK - SILVER



## DIMENSIONS

### PRODUCT

LENGTH: 26.5" / 67.3 CM  
 WIDTH: 18.5" / 46.9 CM  
 HEIGHT: 31" / 78.7 CM

### COLOUR BOX

LENGTH: 26.25" / 66.6 CM  
 WIDTH: 4.25" / 10.7 CM  
 HEIGHT: 18.25" / 46.3 CM

### OUTER CARTON

LENGTH: 27" / 68.58 CM  
 WIDTH: 9.5" / 24.13 CM  
 HEIGHT: 26.5" / 67.31 CM



MGP ACTION SPORTS - ESTABLISHED 2002

# KICK

## EXTREME

THE MADD GEAR KICK EXTREME STUNT SCOOTER HAS BEEN REFINED FOR 2019, PRODUCING A DIALED COMPLETE THAT STRIKES THE CRUCIAL BALANCE BETWEEN PERFORMANCE AND DURABILITY.

DESIGNED FOR RIDERS 8 YEARS AND UP, THE 4.5" WIDE X 19.5" LONG DECK IS THE IDEAL SIZE FOR RIDERS LOOKING TO TAKE THEIR RIDING TO THE NEXT LEVEL.

EACH COMPONENT OF THE MADD GEAR KICK EXTREME STUNT SCOOTER HAS BEEN HAND SELECTED TO PRODUCE A COMPLETE SCOOTER THAT CAN STAND UP TO THE DEMANDS OF TODAY'S UP AND COMING PRO RIDERS IN A PACKAGE THAT IS EASY TO TRICK AND PROMOTES FAST PROGRESSION!

WEIGHING JUST 3.22KG / 7.1LBS, THE MG KICK EXTREME IS THE SCOOTER FOR YOU.

[www.maddgear.com](http://www.maddgear.com)



### FEATURES

- 130MM SOFT TPR SWIRLS GRIND GRIPS WITH NYLON BAR-ENDS
  - 6061 ALUMINUM EXTREME DOUBLE CLAMP
  - 110MM CNC TRIPLE SPOKED ALLOY CORES WITH MG HIGH-SPEED POLYURETHANE FORMULA
  - ABEC 7 HIGH-SPEED CHROME BEARINGS
  - ALUMINUM 19.5" LONG X 4.5" WIDE DECK WITH INTEGRATED DOWNTUBE & HEADTUBE CUTOUT
  - DURABLE MG HYDROCOATED PAINT
- COMPLETE WEIGHT: 3.22 KG / 7.1 LBS



FOR AGES 8+ YEARS | WEIGHT RANGE: 36-100KG (80-220 LBS)



2-TONE SWIRL DESIGN

BAR DECAL

THE KICK EXTREME SCOOTER FEATURES A HIGH QUALITY WATER TRANSFER GRAPHIC ON THE BAR.

THREADLESS INTEGRATED WITH SEALED BEARING.

THE KICK EXTREME FEATURES AN AVIATION GRADE 6061 ALUMINUM T4 & T6 HEAT TREATED DECK WITH INTEGRATED DOWNTUBE AND HEADTUBE CUTOUT.



110MM CNC ALLOY CORES WITH MG HIGH-SPEED POLYURETHANE FORMULA.

PRE-DIALED & EASY TO ASSEMBLE THE MG KICK EXTREME SCOOTER COMES READY TO SHRED AND EASILY PASSES ANY DROP TEST!

JUST SLIDE ON THE BARS, SECURELY TIGHTEN THE CLAMP AND YOU ARE READY TO ROLL.



# SPECIFICATIONS AND DETAILS

## COMPONENTS

### GRIPS

130MM MG SOFT TPR SWIRLS GRIND GRIPS WITH NYLON BAR-ENDS

### BAR

MG LOW RISER 20.5" W X 23" H (52.0 CM W X 58.4 CM H) 4031 JAPANESE CHROMOLY / STANDARD DIAMETER

### CLAMP

6061 ALUMINUM EXTREME DOUBLE

### HEADSET

THREADLESS INTEGRATED WITH SEALED BEARING

### FORK

6061 ALUMINUM IHC THREADLESS

### WHEELS

110MM CNC TRIPLE SPOKED ALLOY CORES WITH MG HIGH-SPEED POLYURETHANE FORMULA

### BEARINGS

ABEC 7 HIGH-SPEED CHROME BEARINGS

### DECK

KICK SERIES 6061 ALUMINUM T4 & T6 HEAT TREATED 19.5" L X 4.5" W DECK WITH INTEGRATED DOWNTUBE AND HEADTUBE CUTOUT

### GRIP TAPE

MG KICK EXTREME FULL DECK

### BRAKE

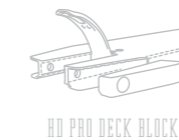
V2 MG COMPOSITE BLITZ BRAKE

### FINISH

DURABLE MG HYDROCOATED PAINT

### RECOMMENDED AGE & WEIGHT

8 YEARS & UP  
WEIGHT RANGE: 36-100KG / 80-220LBS



FIND MORE INFORMATION ON PAGE 36.



## DIMENSIONS

PRODUCT	COLOUR BOX	OUTER CARTON
LENGTH: 27" / 68.5 CM	LENGTH: 27" / 68.5 CM	LENGTH: 28" / 71.12 CM
WIDTH: 20.5" / 52.0 CM	WIDTH: 4.75" / 12.0 CM	WIDTH: 11" / 27.94 CM
HEIGHT: 32" / 81.2 CM	HEIGHT: 20" / 50.8 CM	HEIGHT: 28.5" / 72.39 CM



## EXTREME COLOUR RANGE



BLUE - GREEN



GREEN - BLUE



RED - BLUE



BLACK



PURPLE - TEAL



TEAL - PINK

MGP ACTION SPORTS - ESTABLISHED 2002



# KICK

# KAOS

THE MADD GEAR KICK KAOS STUNT SCOOTER WILL TAKE YOUR RIDING AND PROGRESSION TO THE NEXT LEVEL INFUSED WITH NINE GENERATIONS WORTH OF TECHNOLOGY AND PRODUCT TESTING FROM THE WORLD'S BEST PRO RIDERS!

DESIGNED FOR RIDERS 8 YEARS AND UP, THE MADD GEAR KICK KAOS STUNT SCOOTER STRIKES THE BALANCE ON RIDE QUALITY, DURABILITY AND PERFORMANCE THROUGH HAND SELECTED MATERIALS AND COMPONENTS PACKAGED TOGETHER IN THE IDEAL PROPORTIONED COMPLETE FOR UP AND COMING RIDERS.

DIALED STRAIGHT OUT OF THE BOX AND UNCOMPROMISING ON BUILD QUALITY, THE MG KICK KAOS IS EASY TO TRICK AND IS READY TO TAKE YOUR PROGRESSION TO THE NEXT LEVEL.

WEIGHING JUST 3.35 KG / 7.4 LBS, THE MG KICK KAOS IS THE NEXT SCOOTER FOR YOU!

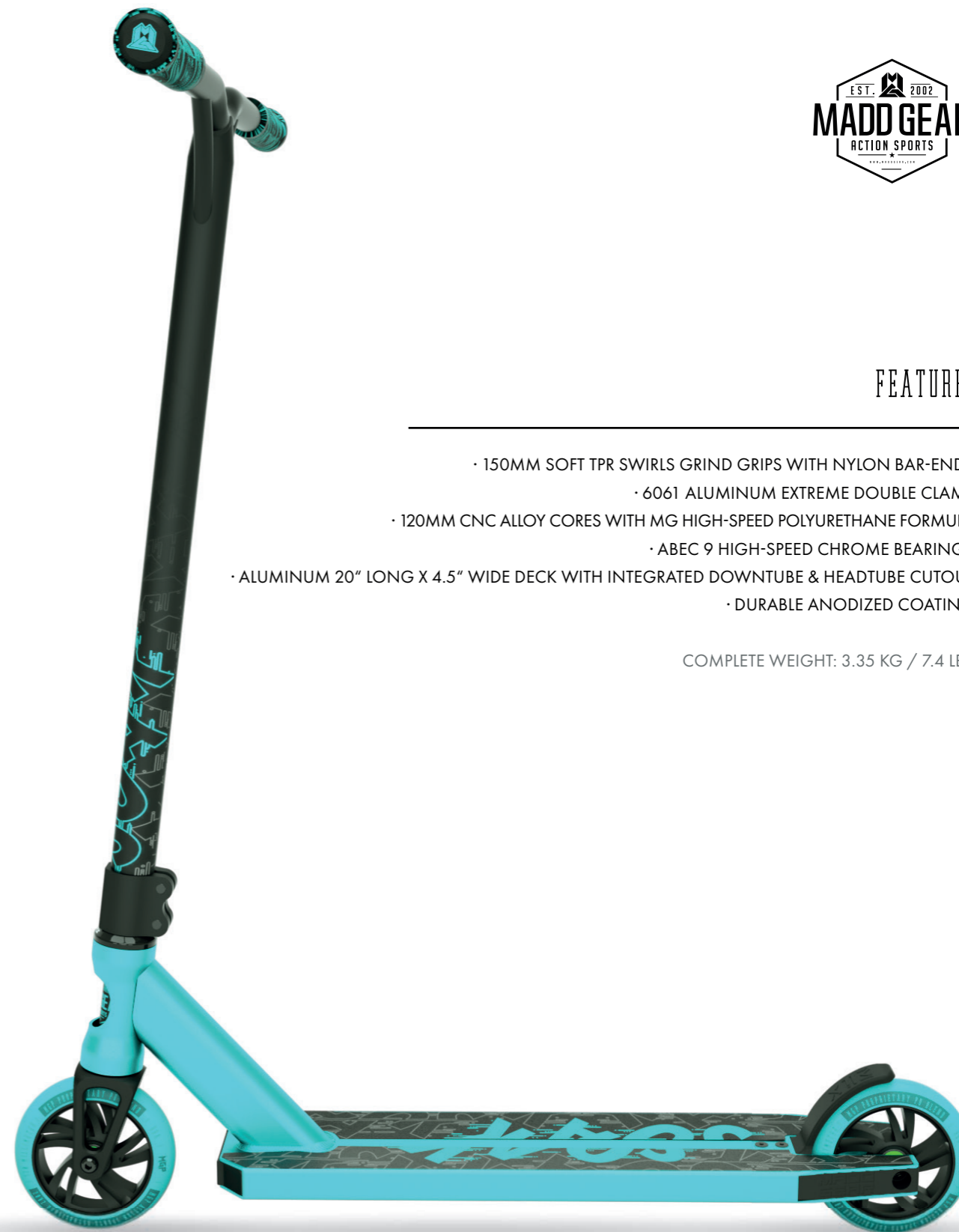
[www.maddgear.com](http://www.maddgear.com)



## FEATURES

- 150MM SOFT TPR SWIRLS GRIND GRIPS WITH NYLON BAR-ENDS
- 6061 ALUMINUM EXTREME DOUBLE CLAMP
- 120MM CNC ALLOY CORES WITH MG HIGH-SPEED POLYURETHANE FORMULA
- ABEC 9 HIGH-SPEED CHROME BEARINGS
- ALUMINUM 20" LONG X 4.5" WIDE DECK WITH INTEGRATED DOWNTUBE & HEADTUBE CUTOUT
- DURABLE ANODIZED COATING

COMPLETE WEIGHT: 3.35 KG / 7.4 LBS



FOR AGES 8+ YEARS | WEIGHT RANGE: 36-100KG (80-220 LBS)



2-TONE SWIRL DESIGN

BAR DECAL

THE KICK KAOS SCOOTER FEATURES A HIGH QUALITY WATER TRANSFER GRAPHIC ON THE BAR.

THREADLESS INTEGRATED WITH SEALED BEARING.

THE KICK KAOS FEATURES AN AVIATION GRADE 6061 ALUMINUM T4 & T6 HEAT TREATED DECK WITH INTEGRATED DOWNTUBE AND HEADTUBE CUTOUT.



120MM CNC ALLOY CORES WITH MG HIGH-SPEED POLYURETHANE FORMULA.

PRE-DIALED & EASY TO ASSEMBLE THE MG KICK KAOS SCOOTER COMES READY TO SHRED AND EASILY PASSES ANY DROP TEST!

JUST SLIDE ON THE BARS, SECURELY TIGHTEN THE CLAMP AND YOU ARE READY TO ROLL.



# SPECIFICATIONS AND DETAILS



## COMPONENTS

### GRIPS

150MM MG SOFT TPR SWIRLS GRIND GRIPS WITH NYLON BAR-ENDS

### BAR

MG Y-BAR 22.5" W X 24" H (57.1 CM W X 60.9 CM H) 4031 JAPANESE CHROMOLY / STANDARD DIAMETER

### CLAMP

6061 ALUMINUM EXTREME DOUBLE

### HEADSET

THREADLESS INTEGRATED WITH SEALED BEARING

### FORK

6061 ALUMINUM IHC THREADLESS

### WHEELS

120MM CNC ALLOY CORES WITH MG HIGH-SPEED POLYURETHANE FORMULA

### BEARINGS

ABEC 9 HIGH-SPEED CHROME BEARINGS

### DECK

KICK SERIES 6061 ALUMINUM T4 & T6 HEAT TREATED 20" L X 4.5" W DECK WITH INTEGRATED DOWNTUBE AND HEADTUBE CUTOUT

### GRIP TAPE

MG KICK KAOS SPLIT DECK

### BRAKE

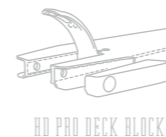
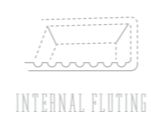
V2 MG COMPOSITE BLITZ BRAKE

### FINISH

DURABLE ANODIZED COATING

### RECOMMENDED AGE & WEIGHT

8 YEARS & UP  
WEIGHT RANGE: 36-100KG / 80-220LBS



FIND MORE INFORMATION ON PAGE 36.



KADS COLOUR RANGE



BLACK - BLACK



BLACK - SILVER



BLACK - TEAL



BLACK - GOLD



DIMENSIONS

PRODUCT

LENGTH: 28" / 71.1 CM  
 WIDTH: 22.5" / 57.1 CM  
 HEIGHT: 33.5" / 85.0 CM

COLOUR BOX

LENGTH: 27.75" / 70.4 CM  
 WIDTH: 5" / 12.7 CM  
 HEIGHT: 23" / 58.4 CM

OUTER CARTON

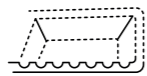
LENGTH: 30.5" / 77.47 CM  
 WIDTH: 10.5" / 26.67 CM  
 HEIGHT: 28" / 71.12 CM





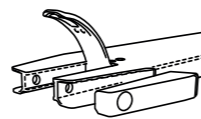


## TECHNOLOGIES



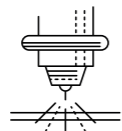
INTERNAL FLUTING

MADD GEAR KICK SCOOTERS FEATURE INTERNALLY FLUTED TUBING IN THE CONSTRUCTION OF THE BARS AS WELL AS THROUGHOUT THE LENGTH OF ALL DECKS. THIS PATENTED PROCESS IS PROVEN TO INCREASE STRENGTH UNDER 3 DIMENSIONAL LOADS AS WELL AS STIFFNESS WITHOUT ADDING ADDITIONAL WEIGHT TO THE MATERIAL.



HD PRO DECK BLOCKS

ALL MADD GEAR KICK STUNT SCOOTERS FEATURE OUR HEAVY-DUTY PP DECK BLOCKS SLOTTED INTO THE FRONT AND REAR OF THE DECK. THESE DECK BLOCKS BOTH SEAL THE ENDS OF THE DECK WITHOUT ADDING WEIGHT SEEN WITH TRADITIONAL WELDED CLOSURE DESIGNS AS WELL AS ADD ADDITIONAL STRENGTH AND STIFFNESS TO THE OVERALL DECK STRUCTURE.



ROBOTIC WELDING

EVERY MADD GEAR SCOOTER HEADTUBE IS MACHINE WELDED TO THE DECK INSURING AN EXTREMELY HIGH CONSISTENCY AND ACCURACY UNMATCHED BY MANUAL WELDING. THE MADD GEAR MACHINE WELDING PROCESS MEANS EVERY SCOOTER THAT LEAVES PRODUCTION IS MONITORED BY PRECISE SOFTWARE TO MEET OUR EXACT SPECIFICATION.



T6 HEAT TREATMENT

ALL MADD GEAR SCOOTERS ARE RATED WITH BOTH T4 AND T6 HEAT TREATMENT. THE 6061 ALUMINUM USED THROUGHOUT OUR DECKS AND BARS ARE FIRST RUN THROUGH A PROCESS CALLED SOLUTION HEAT TREATING AND THEN THROUGH AN AGING PROCESS WHICH GENERATES A MATERIAL THAT IS BOTH STRUCTURALLY STRONG BUT ALSO VERY DURABLE.

## YOUR NOTES

---



---



---



---



---



---



---



---



---

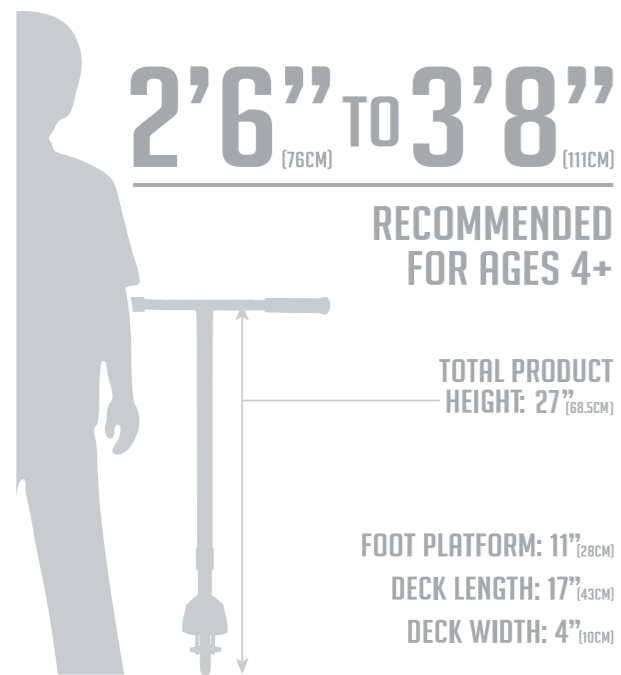


---

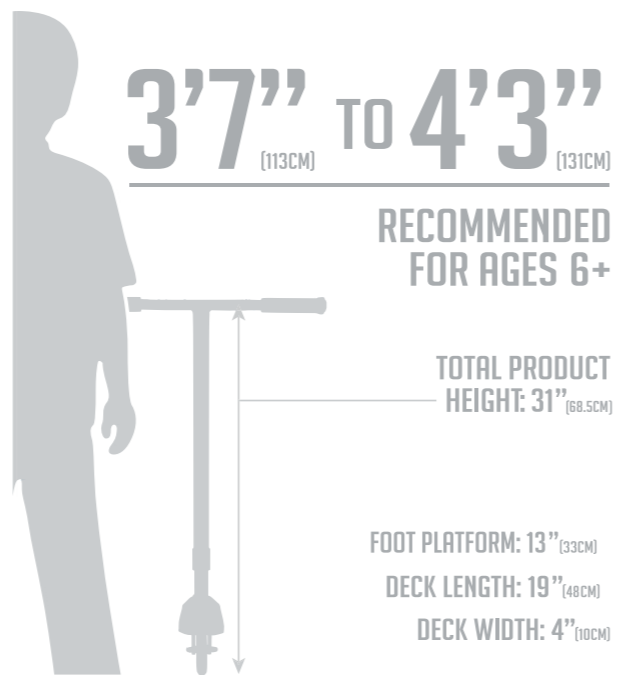
KICK



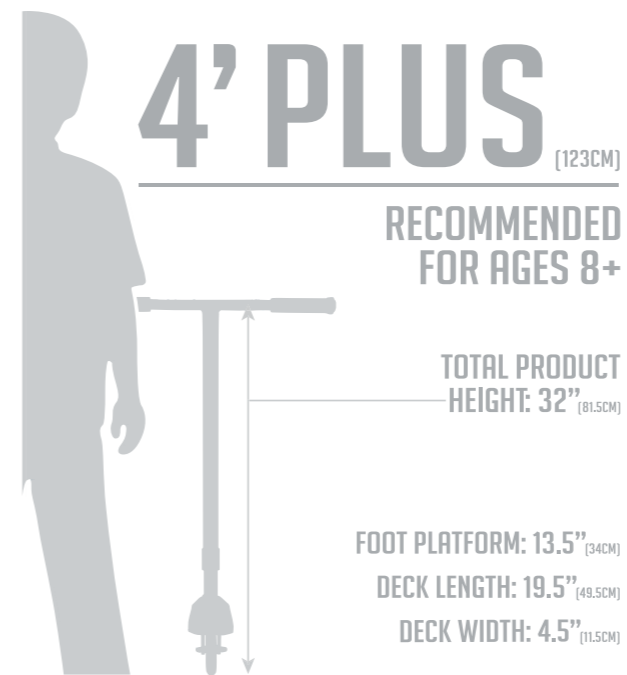
## RASCAL



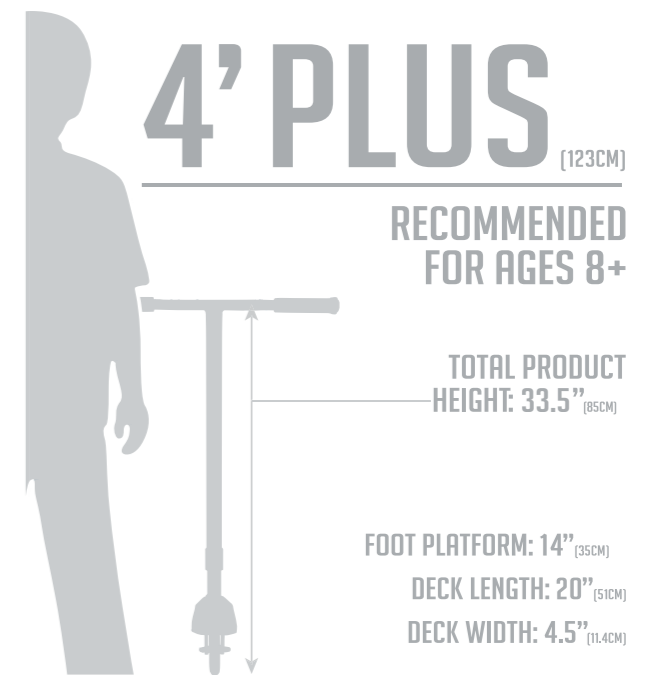
## PRO



## EXTREME



## KAOS



**MADD GEAR AUSTRALIA**

12/35 GARDEN ROAD, CLAYTON VICTORIA 3168, AUSTRALIA  
EMAIL: SALES@MADDGEAR.COM

---

**MADD GEAR UK & IRELAND**

DISTRIBUTED BY J&R SPORTS LIMITED  
VESTY BUSINESS PARK, AINTREE, MERSEYSIDE, L30 1NY, UK  
EMAIL: SALESUK@MADDGEAR.COM

CUSTOMER SERVICE: UKSUPPORT@MADDGEAR.COM

---

**MADDGEAR NZ**

MG DISTRIBUTORS LIMITED  
147 CAPTAIN SPRINGS ROAD, ONEHUNGA,  
1061, AUCKLAND, NEW ZEELAND  
EMAIL: SALESNZ@MADDGEAR.COM

---

**MADD GEAR LLC USA**

5780 W. OAKLAND STREET, CHANDLER, ARIZONA 85226  
EMAIL: SALESUSA@MADDGEAR.COM

---

**MADD EUROPE GMBH**

DISTRIBUTED BY SK8TE4U SPORTS PRODUCTION GMBH  
MAX-BORN-STR. 2, 53773 HENNEF, GERMANY  
EMAIL: SALESEU@MADDGEAR.COM

CUSTOMER SERVICE: SERVICE@SK8TE4U.COM

**FACEBOOK:**

MADDGEAR.MGP

**YOUTUBE:**

MGPACTIIONSPORTS

**INSTAGRAM:**

@MGP\_ACTIONSPORTS

**TWITTER:**

@MGPACTIIONSPORTS

[WWW.MADDGEAR.COM](http://WWW.MADDGEAR.COM)

