



M A D E I N C A L I F O R N I A

Dedicated to the growth of board sports
through performance, community,
and creative expression.



INTRODUCTION

ETHOS

Skateboarding, snowboarding, and surfing have enriched our lives. Loaded's primary mission is to share that stoke and to do what we can to help them expand and evolve.

INDUSTRY

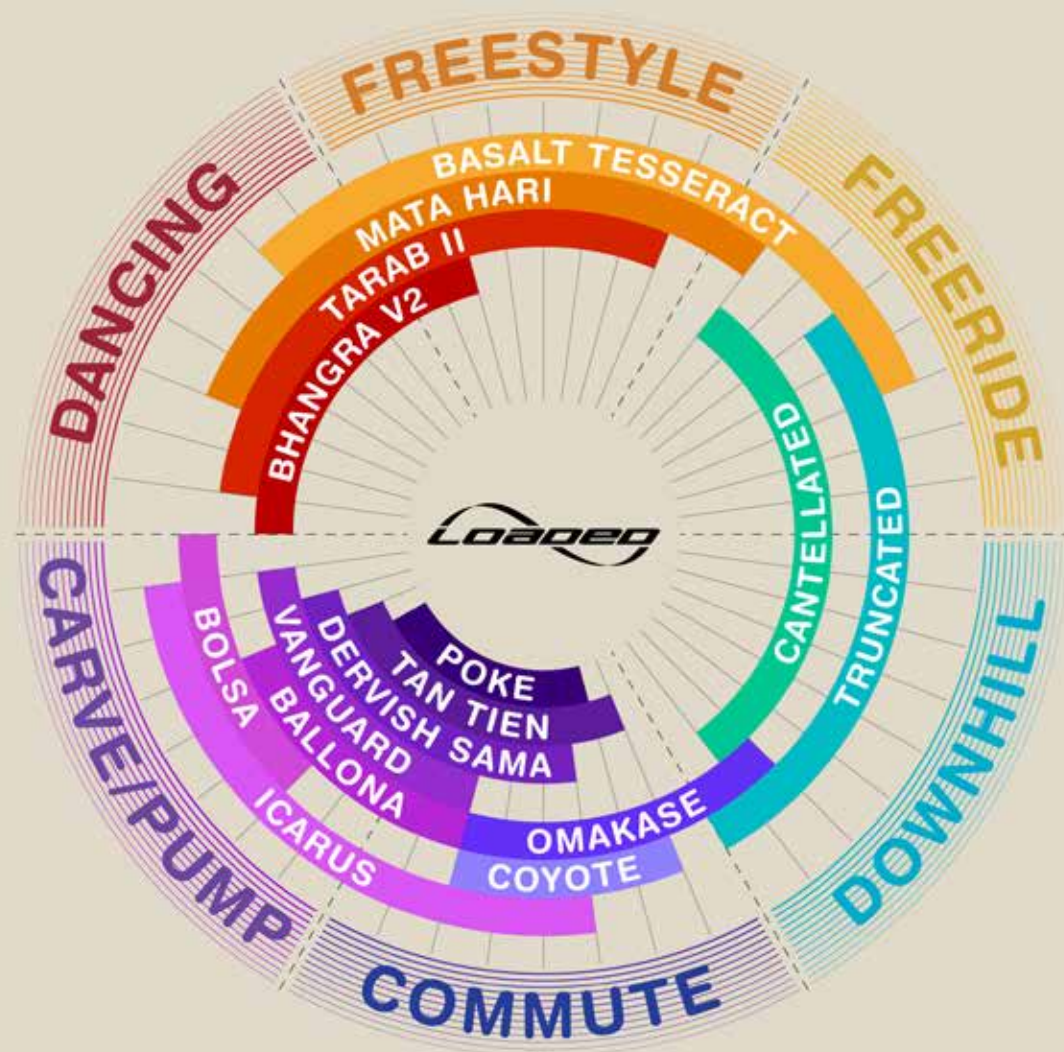
Our current priority is to grow the longboard community. We view all other longboard companies as friends and partners who are collectively growing skateboarding. We don't have any intention of fighting over market share but rather look to innovate, inspire, and grow longboarding for the good of all.

DEALERS

The specialty skate/surf/snow shops and distributors are the heart and soul of board-riding culture. To that end, we work with the best partners worldwide and are committed to supporting these shops and distributors in order to ensure their long-term success.

COMMUNITY

Over the past 20 years, longboarding has touched many people. The current community is vibrant, diverse, global, and inclusive. We are proud of this and committed to helping it flourish.



HOW WE KEEP IT ALL TOGETHER

1 Gallon of Entropy Resin Saves

85
servings of
water*
(16 fl.oz.)



1,300
smartphone
charges of
energy*



10
miles of car
pollution*



* over industry standard manufacturing processes

85
servings of
water saved*
(16 fl.oz.)



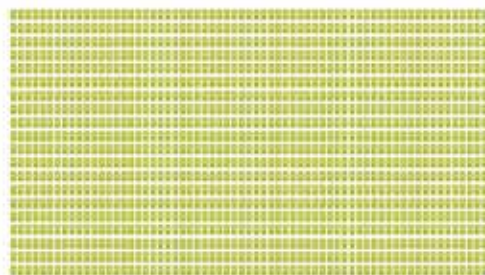
* over industry standard manufacturing processes for one gallon of epoxy resin

10
miles of car
pollution saved*



* over industry standard manufacturing processes for one gallon of epoxy resin

1,300
smartphone charges of
energy saved*



* over industry standard manufacturing processes for one gallon of epoxy resin



MADE IN CALIFORNIA

FLEX
<1





Compact and comfy, the Loaded Chinchiller is a carving and pumping board designed for maximum fun. Mild rocker and concave, subtle flex, and easy handling make it accessible and intuitive, while the symmetrical shape and mellow kicks offer the versatility to add a bit of freestyle and freeride spice to your daily ride.

Length:	34" / 86.4 cm
Width:	8.5" / 21.6 cm
Wheelbase:	21" / 53.3 cm
Profile:	rocker
Flex:	subtle
Weight:	3.1 lb / 1.4 kg

Trucks:	Paris 150mm 50°
Wheels:	65mm Love Handles
Bearings:	Jehu V2
Hardware:	Loaded 1" Buttonhead

**BIG CHILLIN'.
LOW-KEY THRILLIN'.**

Complete: \$176.40 / \$299 MSRP
Deck: \$105.80 / \$189 MSRP



LOADED TARAB II



LET THE RHYTHM MOVE YOU.

Since 2008 Loaded has been on the forefront of longboard dancing. The Tarab II deepens our roots and seeks to advance modern longboard dancing through thoughtful design and material evolution. Ideal for riders who want a versatile and well-rounded platform for surfy boardwalking lines, smooth freestyle trickery, and everything in between.

FLEX RECOMMENDATIONS

Flex 1: 140-270+ lbs (63-123+ kg)
Flex 2: 80-190+ lbs (36-86+ kg)

LONGBOARD SPECS

Length: 47" (119 cm)
Width: 9.5" (24.1 cm)
WB: 30.5-31.25" (77.5-79.4 cm)
Profile: rocker
Weight: 4.9 lbs / 2.2 kg

STANDARD SETUP

Paris 180mm 50° Trucks, 65mm
Fat Free Wheels, Jehu V2
Bearings, Loaded Hardware



SHRIMP OF A BOARD WHALE OF A GOOD TIME



Agile, compact, and light, the Loaded Ballona elevates the mini cruiser experience. Meticulously sculpted curvatures result in a unique mini "longboard" with tuned steering and responsive handling. Perfect for urban commuting, people slalom, driveway slashing, pump tracks and skatepark flow. Small in stature, colossal in character.

BALLONA MOBY

Paris 150 mm 50° Trucks, Fat Free Wheels, Jehu V2 Bearings, and Loaded Hardware.

Length: 27.75" / 70.5 cm
Width: 9" / 22.9 cm
Wheelbase: 14.75-16" / 37.5-40.6 cm
Profile: rocker
Weight: 2.6 lbs / 1.2 kg

MOBY PRICING

Complete: \$131.40 / \$219 MSRP
Deck: \$57 / \$96 MSRP



BALLONA WILLY

Paris 150mm 50° Trucks, Love Handle Wheels, Knuckle Bushings, Jehu V2 Bearings, and Loaded Hardware

Length: 27.75" / 70.5 cm
Width: 9" / 22.9 cm
Wheelbase: 14.75-16" / 37.5-40.6 cm
Profile: rocker
Weight: 2.6 lbs / 1.2 kg

WILLY PRICING

Complete: \$137.40 / \$229 MSRP
Deck: \$57 / \$96 MSRP



Loaded

M
A
T
A

H
A
R
I



FUN THINGS COME IN SMALLER PACKAGES

Mata Hari

Continuing the legacy of Loaded dancers, the Mata Hari embraces a progressive and rapidly evolving new era of longboard dancing and freestyle. Compact dimensions, lightweight construction, poppy kicktails, and a range of wheelbase options make the Mata Hari our most technically adept board for those who live to explore and challenge what is possible on a dancing longboard.

Length: 44.5" / 113 cm
Width: 9.25" / 23.5 cm
Wheelbase: 27.25" / 69.6 cm
Profile: rocker
Weight: 4.6 lbs / 2.1 kg

Paris 180 mm 50° Trucks, 65mm Fat
Free Wheels, Jehu V2 Bearings, and
Loaded Hardware

Complete: \$193.20 / \$339 MSRP
Deck: \$117.20 / \$213 MSRP





C7 SURFSKATE

Length: 31" / 78.75 cm
 Width: 9.4" / 24 cm
 Wheelbase: 16 & 17" / 40 & 43 cm
 Profile: rocker with flared wheel wells
 Weight (deck): 3 lbs / 1.35 kg

Carver C7/C2 Truck Set, 70mm
 4President Wheels, Knuckle
 Bushings, Jehu V2 Bearings, Loaded
 Hardware

Complete: \$179.40 / \$299 MSRP



Loaded Carver Bolsa

The epitome of flow has hit the pavement. Compact, comfortable, and agile, the Bolsa deck is Loaded's spin on the stellar CX and C7 truck systems by Carver Skateboards. Equipped with Orangatang wheels and bushings offers a premium hard-carving surfskate experience like no other!



CX SURFSKATE

Length: 31" / 78.75 cm
 Width: 9.4" / 24 cm
 Wheelbase: 16 & 17" / 40 & 43 cm
 Profile: rocker with flared wheel wells
 Weight (deck): 3 lbs / 1.35 kg

Carver CX/C2 Truck Set, 70mm
 4President Wheels, Knuckle
 Bushings, Loaded Hardware

Complete: \$167.40 / \$279 MSRP



BOLSA

Loaded carver





DANCING | FREESTYLE

Made in California



Bhangra V2

Length: 48.5" / 123 cm
Width: 9.5" / 24 cm
Wheelbase: 32.75" / 83.19 cm
Profile: rocker
Weight (deck): 5.1-5.5 lbs / 2.3-2.5 kgs

Flex <1: 130-300 lbs+ / 60-136+ kgs
Flex 2: 90-190+ lbs / 40-86+ kgs

Complete: \$224.8 / \$398 MSRP
Deck Only: \$149.60 / \$272 MSRP

Designed for the fanciest of footwork, the Bhangra offers a spacious platform with plenty of room for all your dance moves yet is nimble enough for advanced freestyle tricks and steezy slides. Ideal for dancing/freestyle gurus and surf-style aficionados looking for a smooth and graceful riding experience.



Tarab II

Length: 47" / 119 cm
Width: 9.5" / 24 cm
Wheelbase: 31.25-33.25" / 79.4-81.5 cm
Profile: rocker, CNC wheel wells
Weight (deck): 5 lbs / 2.3 kgs

Flex 1: 140-270 lbs+ / 63-123+ kgs
Flex 2: 80-190+ lbs / 36-86+ kgs

Complete: \$248.50 / \$426 MSRP
Deck Only: \$173 / \$299 MSRP

The Tarab is designed to push the boundaries of modern longboard dancing. We launched our first Dancer in 2008, followed by the Bhangra in 2010. The Tarab builds on that history. Lightweight, durable, and technical, the Tarab elevates the level of longboard dancing and modern freestyle.



Mata Hari

Length: 44.5" / 113 cm
Width: 9.25" / 23.5 cm
Wheelbase: 27.25-29.25" / 69.2-74.3 cm
Profile: rocker
Weight (deck): 4.6 lbs / 2.1 kgs

Flex: ONE TO RULE THEM ALL
(varies by wheelbase)

Complete: \$193.20 / \$339 MSRP
Deck: \$117.20 / \$213 MSRP

The Mata Hari embraces a progressive and rapidly evolving new era of longboard dancing and freestyle. Compact dimensions, lightweight construction, poppy kicktails, and a range of wheelbase options make the Mata Hari our most technically adept board for those who live to explore and challenge what is possible on a dancing skateboard.



Basalt Tesseract

Length: 39" / 99 cm
Width: 9.5" / 24 cm
Wheelbase: 24.5-33.25" / 62.2-66 cm
Profile: rocker with flared wheel wells
Weight (deck): 4.5 lbs / 2.0 kgs

Flex: THERE CAN ONLY BE ONE

Complete: \$192.10 / \$340 MSRP
Deck Only: \$118.80 / \$216 MSRP

The Basalt Tesseract integrates dual kicktails, rocker, wheel well flares, widened W-concave, and multiple wheelbase options into a lightweight package designed for hilly descents, snappy slides, lofty ollies, techy manual combos, and cross-steps galore. With a mellow flex, the Basalt Tesseract is perfect for freeride and freestyle alike.

CARVING | PUMPING

Made in California



Icarus

Length: 38.4" / 97.5 cm
Width: 8.6" / 22 cm
Wheelbase: 28.25" / 71.76 cm
Profile: camber, wheel flares
Weight (deck): 2.9 lbs / 1.3 kgs

Flex 1: 170-270+ lbs / 75-115+ kgs
Flex 2: 75-200+ lbs / 35-90+ kgs

Complete: \$210.40 / \$364 MSRP
Deck Only: \$122.60 / \$219 MSRP

The carving board, reimagined. Combining wheel flares, cork bottom sheet, a balanced flex pattern, and novel manufacturing, the Icarus longboard is the pinnacle of our search for the ultimate soulful carving experience. With it's dynamic concave, the Icarus provides structural integrity in the neck and reponsive flex towards the center.



Tan Tien

Length: 39" / 99 cm
Width: 8.75" / 22.3 cm
Wheelbase: 27" / 68.6 cm
Profile: camber, drop-thru
Weight (deck): 3.1-3.5 lbs / 1.4-1.6 kgs

Flex 1: 170-270+ lbs / 75-123+ kgs
Flex 2: 110-210+ lbs / 59-95+ kgs

Complete: \$183.10 / \$324 MSRP
Deck Only: \$108.40 / \$197 MSRP

A flexible deck, drop-through truck mounts, and usable kicks allow the Tan Tien to pack a lot into a relatively small package. The complex contours create a super responsive board that allows for increased confidence when leaning into turns, popping tricks, and powering through slides.



Dervish Sama

Length: 42.8" / 109 cm
Width: 9" / 22.9 cm
Wheelbase: 31.5" / 80 cm
Profile: camber, drop-thru
Weight (deck): 3.0-3.6 lbs / 1.4-1.6 kgs

Flex 1: 170-270+ lbs / 75-122+ kgs
Flex 2: 90-185+ / 40-84 kgs

Complete: \$185.80 / \$328 MSRP
Deck Only: \$108.90 / \$198 MSRP

Designed as an intuitive carving and pumping board, the Dervish Sama longboard is low and easy to ride for both the first-time skater looking to cruise around town and the experienced rider seeking a soulful, snowboard-inspired ride and the ability to explore longboard dancing and freestyle.



Vanguard

Length: 38" & 42" / 98 & 107 cm
Width: 9.5" / 24 cm
Wheelbase: 31.25-33.25" / 79.4-81.5 cm
Profile: rocker, CNC wheel wells
Weight (deck): 5 lbs / 2.3 kgs

Flex 1: 175-230+ lbs / 80-105+ kgs
Flex 2: 150-210+ lbs / 68-95+ kgs
Flex 3: 140-200+ lbs / 64-90 kgs
Flex 4: 90-170+ lbs / 40-77+ kgs

Complete: \$179.10 / \$317 MSRP
Deck Only: \$101.20 / \$184 MSRP

The Vanguard longboard, brings lightweight snowboard-inspired construction and performance to the pavement. Camber, sidecuts, and high-energy flex allow for responsive carving, pumping, and commuting. The Vanguard has stayed in our lineup since 2002 because this classic never goes out of style.

MINIS | COMMUTERS

Made in California



Poke

Length: 34" / 86 cm
Width: 9.125" / 23.18 cm
Wheelbase: 20.75" / 52.71 cm
Profile: rocker, wheel flares
Weight (deck): 2.8 lbs / 1.3 kg

Flex: Subtle but poppy!

Complete: \$210.40 / \$364 MSRP
Deck Only: \$122.60 / \$219 MSRP

Live, Love, Poke.
Featuring highly functional kicktails and a comfortable platform with concave, rocker, and wheel well flares, the Poke is a versatile urban explorer that keeps up with your every whim and makes each outing a creative, dynamic adventure.



Coyote

Length: 30.75" / 78.1 cm
Width: 8.375" / 21.3 cm
Wheelbase: 17.5" / 44.5 cm
Profile: rocker, wheel flares
Weight (deck): 2.8 lbs / 1.3 kg

Flex: Just the one.

Complete: \$183.10 / \$324 MSRP
Deck Only: \$108.40 / \$197 MSRP

A lightweight, compact, locker-friendly city slasher that's perfect for freeride, freestyle, and cruising the streets (not to mention easy on the wallet). As part of our Artist Series, the Coyote showcases limited-edition graphics by creators we love. Howl at the moon!



Ballona

Length: 27.75" / 70.5 cm
Width: 9" / 22.9 cm
Wheelbase: 14.75-16" / 37.5-40.6 cm
Profile: rocker, spoon concave
Weight (deck): 2.6 lbs / 1.2 kg

Flex: Solid and dependable.

Complete: \$185.80 / \$328 MSRP
Deck Only: \$108.90 / \$198 MSRP

Agile, compact, and light, the Loaded Ballona elevates the minicruiser experience. Meticulously sculpted curvatures result in a unique mini "longboard" with tuned steering and responsive handling. Perfect for urban commuting, people slalom, driveway slashing, pump tracks, and skatepark flow. Small in stature, colossal in character.



Bolsa

Length: 31" / 78.75 cm
Width: 9.4" / 24 cm
Wheelbase: 16 & 17" / 40 & 43 cm
Profile: rocker, wheel flares
Weight (deck): 3 lbs / 1.35 kg

Flex: Mondo strongo dude.

Complete (C7): \$179.40 / \$299 MSRP
Complete (CX): \$167.40 / \$279 MSRP

The epitome of flow has hit the pavement. Compact, comfortable, and agile, the Bolsa deck is Loaded's spin on the stellar CX and C7 truck systems by Carver Skateboards. Comes with Orangatang wheels and bushings for a premium hard-carving surfskate experience.

DOWNHILL | FREERIDE

Made in California



Omakase

Length: 33.5" / 85.1 cm
Width: 10" / 25.4 cm
Wheelbase: 20.75-22" / 57.7-55.8 cm
Profile: rocker, wheel flares
Weight (deck): 4.0 lbs / 1.8 kg

Flex : NOT EVEN A LITTLE

Complete (Roe): \$170.50 / \$289 MSRP
Complete (Palm): \$162.80 / \$276 MSRP
Deck Only: \$80.80 / \$137 MSRP

In matters of taste and experience, deferring to another's curation can be a radical act of choice. The Omakase stands on its own as a highly user-friendly analog board. Short, wide, stable, and nimble, the Omakase is a palate-pleasing performer for cruising, commuting, freeride, and freestyle longboarding alike.



Cantellated Tesseract

Length: 36" / 91 cm
Width: 9.5" / 24 cm
Wheelbase: 24.5-26" / 62.2-66 cm
Profile: rocker, wheel flares, w-concave
Weight (deck): 4.5 lbs / 2.0 kg

Flex: SOLID AF

Complete: \$192.10 / \$340 MSRP
Deck Only: \$118.80 / \$216 MSRP

The Cantellated Tesseract integrates a wide single kicktail, rocker, wheel well flares, W concave, and multiple wheelbase options into a lightweight package designed for high speeds, snappy slides, lofty ollies, and techy manual combos.



Truncated Tesseract

Length: 33" / 84 cm
Width: 9.5" / 24 cm
Wheelbase: 24.5-26" / 62.2-66 cm
Profile: rocker, wheel flares, w-concave
Weight (deck): 4.5 lbs / 2.0 kg

Flex: ROCK STEADY

Complete: \$192.10 / \$340 MSRP
Deck Only: \$118.80 / \$216 MSRP

The Truncated Tesseract longboard integrates rocker, wheel well flares, W concave, and multiple wheelbase options into a lightweight, compact, race-inspired package designed for big mountain roads, high speeds, and snappy slides.

NO GLOVE = NO LOVE

ADVANCED FREERIDE GLOVES V2

- High-quality goatskin leather
- Double stitching for durability in key areas
- Leather-reinforced knuckle protection with foam padding
- Leather reinforcement at fingertips and high-contact thumb regions
- Breathable mesh window on back of hand
- Internal Coolmax® wicking fabric
- Velcro strap accommodates a range of wrist sizes and cinches snug over sleeve cuffs
- Reflective trim along cuff and velcro strap for safety and visibility in low-light conditions
- Ergonomic finger shapes for comfort and flexibility
- Velcro palms
- Ultra-High Molecular Weight circular palm slide pucks
- D-ring and hook
- Strategic colorway facilitates both Iron Man and War Machine cosplay

\$35.00 / \$60.00 MSRP



THE STRONGEST BOLTS IN THE WORLD. PERIOD.

BUTTON HEAD HARDWARE

Available sizes: 1", 1.25", 1.5" (Hex key included)

These button head bolts integrate the washer into the bolt itself in order to reduce the height of the bolt heads while still distributing load pressure.

\$3.50 / \$7.00 MSRP



COUNTERSUNK HARDWARE

Available sizes: 1", 1.25" (Hex key included)

Got that sinking feeling again? We'll only make it worse. We've got little bumps (debossed or embossed, we're not sure which is which) on top to further stick you to your deck. Guaranteed to smell like grease.

\$3.50 / \$7.00 MSRP



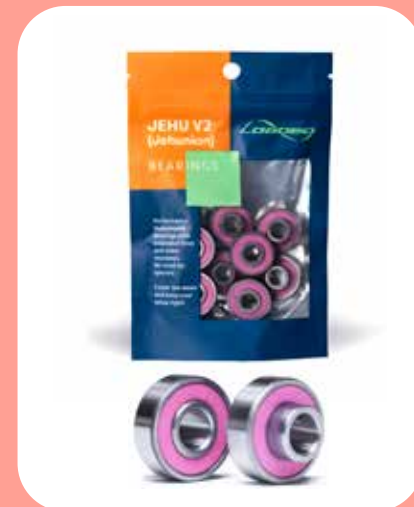
WE'RE ALL PINK ON THE INSIDE.

JEHUNION BEARINGS

The new Loaded Jehunion Bearings (version 2 of our original Jehu bearings) feature extended inner raceways to eliminate the need for separate spacers and speed rings. Crank them all the way down and keep your setup tight.

- Rubberized steel shields for durability and ease of maintenance
- Highest-grade chromium steel
- Interior step ring to maintain constant lubrication
- Developed and tested for the speed, durability, and the rigors of performance longboarding
- Bearings made in Taiwan using Japanese grease and lots of love.

\$12.00 / \$24.00 MSRP





orangatang

MADE IN CALIFORNIA

LOVE HANDLES

EXTRA HIPS FOR EXTRA GRIP.



The Orangatang Love Handles: quick and light meet plush and grippy. A traction-focused design in a compact package for agility, acceleration, and control. With a wheel this pumpable, you'll never do crunches again.

Diameter:	65mm	Core:	high strength urethane
Width:	50mm	Formula:	Happy Thane
Style:	Sharp lips, smooth skin	Weight:	145g
Bearing Seat:	Offset	Duros:	77a, 80a

\$32.80 / \$56 MSRP



MADE IN CALIFORNIA

4PRESIDENT

THE CANDIDATE YOU'VE BEEN WAITING FOR.



Whether you're weaving your way through a hairpin-riddled downhill course or a pedestrian-infested urban jungle, the Orangatang 4President is your candidate of choice.

Diameter:	70mm	Core:	high strength urethane
Width:	53mm	Formula:	Happy Thane
Style:	Sharp lips, smooth skin	Weight:	180g
Bearing Seat:	Offset	Duros:	77a, 80a, 83a

\$33.60 / \$57 MSRP



MADE IN CALIFORNIA

IN HEAT

ALWAYS IN THE MOOD...



Classically proportioned and well balanced for hard carving, pumping, and downhill racing. The offset bearing seat and sharp edges ensure high traction, while the thick lips and suggestively rippled walls provide progressive energy return in and out of turns.

Diameter:	75mm	Core:	high strength urethane
Width:	56mm	Formula:	Happy Thane
Style:	Sharp lips, smooth skin	Weight:	220g
Bearing Seat:	Offset	Duros:	77a, 80a, 83a

\$36.60 / \$62 MSRP



MADE IN CALIFORNIA

KEGEL

SUPPLE, MUSCULAR GRIP.



The Orangatang Kegel is your ticket to high-speed steamroller action and the obliteration of a variety of small mammals (not intended use). With a large supportive core and sharp lips, the Kegel is designed to roll fast, wear evenly, and grip the road like a vice.

Diameter:	80mm	Core:	high strength urethane
Width:	56mm	Formula:	Happy Thane
Style:	Sharp lips, smooth skin	Weight:	230g
Bearing Seat:	Offset	Duros:	77a, 80a, 83a

\$40.70 / \$69 MSRP



MADE IN CALIFORNIA

CAGUAMA

BIG AND BEAUTIFUL



Voluptuous urethane (proportionate in all the right places) for high roll speed, grip, comfort and momentum for commuting, carving, long-distance pushing, pumping, and electric longboards.

Diameter:	85mm	Core:	high strength urethane
Width:	58.5mm	Formula:	Happy Thane
Style:	Round lips, smooth skin	Weight:	270g
Bearing Seat:	Offset	Duros:	77a, 80a, 83a

\$47.20 / \$80 MSRP



MADE IN CALIFORNIA

DAD BOD

ULTIMATE FATHER FIGURE



The biggest and baddest of the Orangatang line up. Combining impeccable roll speed, immunity to debris and cracks, and asymmetrical lips to provide all the right characteristics in the all the right places. They fear no man.

Diameter:	105mm	Core:	Trypo Core
Width:	62mm	Formula:	Happy Thane
Style:	Round lips, smooth skin	Weight:	428g
Bearing Seat:	Offset	Duros:	80a

\$85.50 / \$150 MSRP



MADE IN CALIFORNIA

SKIFF

DO "ROCK THE BOAT"



With a versatile stature, impeccable style, and a ready-to-rock attitude, the skiff is the most interesting wheel in the world. Design for all-terrain use, it is a utilitarian alternative to a traditional street wheel for riding faster, steep, rougher, and longer.

Diameter:	62mm	Core:	high strength urethane
Width:	35mm	Formula:	Happy Thane
Style:	Round lips, rough skin	Weight:	91g
Bearing Seat:	Centerset	Duros:	80a, 83a, 86a

\$30.70 / \$52 MSRP



MADE IN CALIFORNIA

FAT FREE

THE HEALTHIER ALTERNATIVE



If you're ready to lean out your diet, the Orangatang Fat Free is the key to maintaining your board's cardiovascular health and freeride/freestyle figure. A delicacy on the hills or flatlands, the Fat Free does it all without the extra carbs.

Diameter:	65mm	Core:	high strength urethane
Width:	45mm	Formula:	Happy Thane
Style:	Round lips, rough skin	Weight:	130g
Bearing Seat:	Offset	Duros:	77a, 80a, 83a, 86a

\$32.80 / \$54 MSRP



MADE IN CALIFORNIA

STIMULUS

INCENTIVE TO SHRED.



Like a shot of adrenaline for a stale economy of shredding, the Orangatang Stimulus is here to breathe new life into your ride. Equally adept at slides, tricks, dancing and commuting, the Stimulus is the jack of all trades that's captivated our hearts year after year.

Diameter:	70mm	Core:	high strength urethane
Width:	49mm	Formula:	Happy Thane
Style:	Round lips, rough skin	Weight:	160g
Bearing Seat:	Offset	Duros:	77a, 80a, 83a, 86a

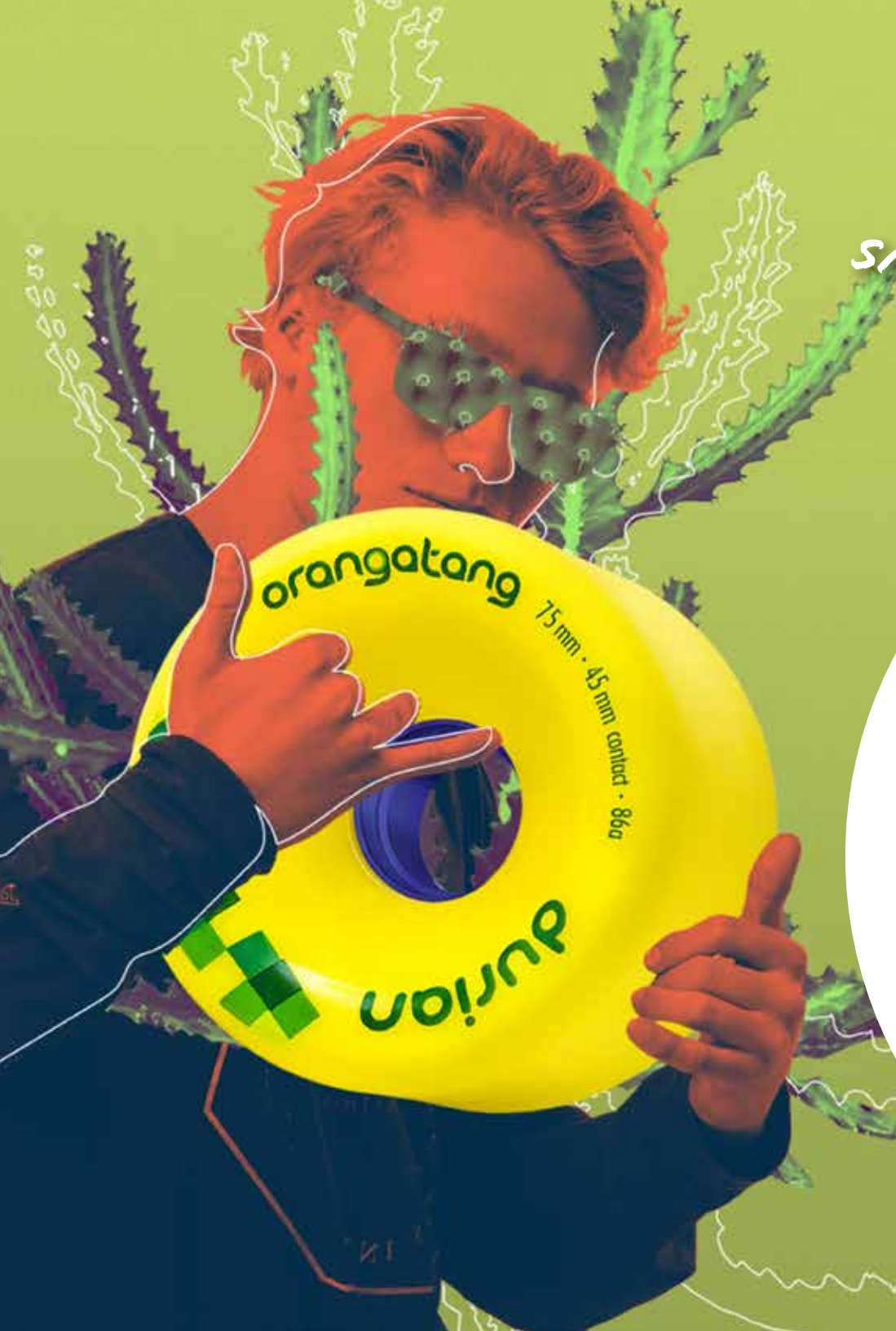
\$34.80 / \$59 MSRP



MADE IN CALIFORNIA

DURIAN

SMELLS LIKE DOWNHILL FREERIDE.



Much like its botanical namesake, the Durian is a big, meaty, and succulent gob of urethane designed to carry you across town to the not-so-local fruit stand or to be smeared liberally over your favorite downhill freeride run.

Diameter:	75mm	Core:	high strength urethane
Width:	52mm	Formula:	Happy Thane
Style:	Round lips, rough skin	Weight:	200g
Bearing Seat:	Offset	Duros:	80a, 83a, 86a

\$37.80 / \$64 MSRP



MADE IN CALIFORNIA

Knuckles

JUICIER BOUNCE, TIGHTER PACKAGE.



Crafted for quick turning response and smooth edge-to-edge transitions, Orangatang Knuckles are the ultimate high-energy bushing upgrade for carving, pumping, dancing, and freestyle longboarding.

\$10.20 / \$20 MSRP

Diameter: 0.95" / 24.1mm
Height (top): 0.59" / 15mm
Height (bottom): 0.67" / 17mm

Formula: Randy Thane
Duros: 87a (soft), 90a (medium)
Soft: 65-190+ lbs (29-86kgs)
Medium: 130-230+ lbs (59-104kgs)



MADE IN CALIFORNIA

NIPPLES

GIVE 'EM A SQUEEZE.



Extra lively and energetic, these double-barrel Nipples will get you all hot and bothered. With a strong return to center, Nipples are designed to spring you from carve to carve allowing for high speed pumping and dancing when properly stimulated.

\$10.20 / \$20 MSRP

Diameter: 1" / 25.4mm
Height (top): 0.56" / 14.2mm
Height (bottom): 0.66" / 15.8mm

Formula: Randy Thane
Duros: soft, medium, hard
Soft: 75-200+ lbs (34-90+ kgs)
Medium: 150-250+ lbs (68-113+ kgs)
Hard: 175-275+ lbs (79-125+ kgs)



MADE IN CALIFORNIA