



**S\*ONE HELMET CO.**

## ABOUT THE S1 LIFER HELMET



“In 2010 we noticed some Vert Skaters, Downhill Skaters, Bike Riders and Roller Derby players were getting knocked out and in some instances getting traumatic brain injuries in traditional soft foam skate helmets. So we took the soft foam helmets into the testing lab and learned that all of the soft foam helmets from every brand failed to meet current helmet safety standards. The soft foam helmets fail the ASTM Multiple Impact test and they fail the CPSC High Impact test. The problem with the soft foam is that the impact energy goes directly through the soft foam and rattles the brain.

So we set out to make a better and safer helmet. We created the S1 Lifer Helmet. The S1 Lifer Helmet is constructed with Fusion Foam™ and is 5x more protective than soft foam skate helmets. The S1 Lifer Helmet passes the ASTM Multiple Impact test and the CPSC High Impact test (soft foam helmets fail these impact tests).

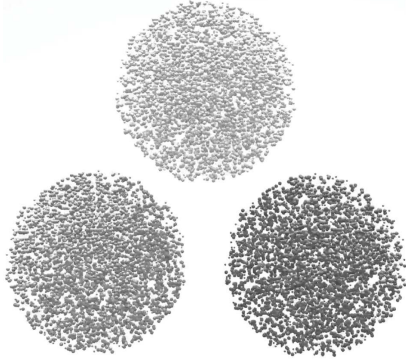
We have taken steps to educate the public about the S1 Lifer Helmet through videos and printed media. Most skaters and parents did not know that traditional skate helmets did not pass any helmet safety standards. They usually only learned the difference after a head injury and that is too late. A Mom who watched her 15 year old son get knocked out for 5 minutes in the bottom of a pool while wearing a soft foam helmet later said to me, ‘I didn’t know there was a difference between the S1 Lifer Helmet and soft foam skate helmets. We bought the soft foam helmet at a skateshop and just figured it was a good helmet. I really wish I knew before’.

We made a helmet that we would want to wear and that we could 100% recommend to family, friends and team riders. When you are wearing an S1 Lifer Helmet you know that you are wearing the best and if you own a retail shop you know that you are offering the best helmet to your customers.” - **Dan McCashin Co-Founder | S1 Helmet Co.**

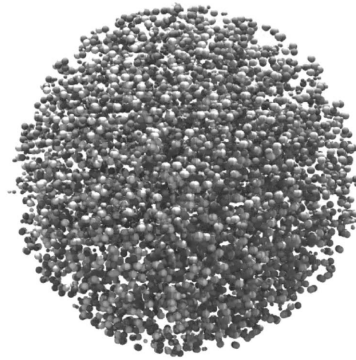


# HOW WE MAKE FUSION FOAM AND WHY IT IS IMPORTANT

Fusion Foam™ absorbs & disperses impact energy 5x better than soft foam. The S1 Lifer Helmet is 5x more protective than traditional soft foam skate helmets.



Fusion Foam™ is created by a patented process that blends low, medium and high density foam beads together.



Fusion Foam™ is soft enough to protect against multiple low force impacts and dense enough to protect against single high impacts.



Fusion Foam™ is then molded into the shape of the S1 Lifer Helmet inner helmet liner.



The S1 Lifer Helmet constructed with Fusion Foam™ is Certified Multiple Impact and Certified High Impact.

**Soft Foam**  
Force passes directly through soft foam into the skull and brain.

SOFT FOAM



VS.

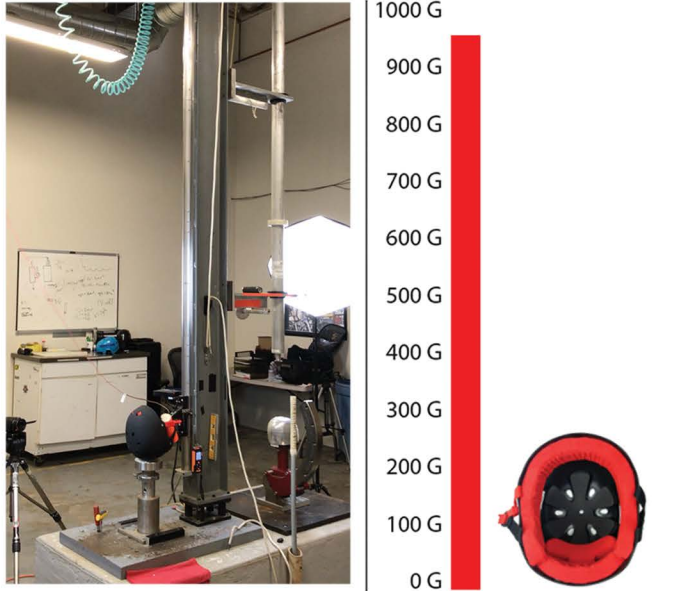
FUSION FOAM™



**Fusion Foam™**  
Force is absorbed, dissipated and repelled so less force affects the brain.

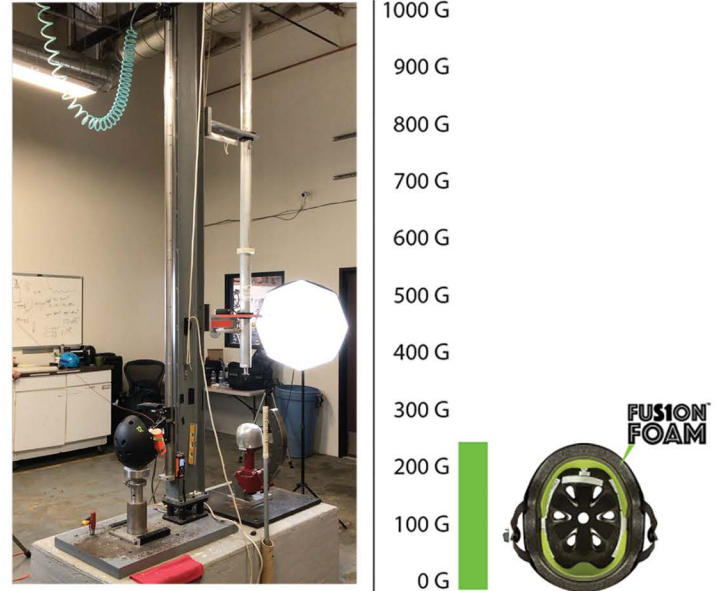
# SOFT FOAM VS FUSION FOAM

Real lab testing proves that the S1 Lifer Helmet with Fusion Foam™ is superior to soft foam helmets. Helmets will fail the multiple impact and high impact certification test when more than 300 G's of impact energy hits the headform. The brain does not like G's. Anything over 300 G's can cause a severe concussion and possible traumatic brain injury or death.



**FAIL** SOFT FOAM HELMET  
Registered at 955 Peak Gs

The soft foam helmet was the industry standard for a longtime but these helmets FAIL all helmet safety standards. As action sports progressed athletes learned the hard way that these helmets failed to protect them in the events of serious impacts to the head. Soft foam helmets are constructed with merely a couple soft foam inserts attached to a plastic outershell. Impact energy goes directly through the soft foam and rattles the brain. These helmets do not provide adequate protection in the case of a serious impact.



**PASS** S1 LIFER HELMET  
Registered at 253 Peak Gs

The S1 Lifer Helmet is constructed with Fusion Foam™ and PASSES the ASTM Multiple Impact and the CPSC High Impact certification tests. The S1 Lifer Helmet fits great, is lightweight and lab tests show it will protect your head 5x more than a soft foam helmet.  
Great Fit + Best Protection = S1 Lifer Helmet



# CERTIFIED TESTING

We took every soft foam helmet from every brand and tested them in an independent, third party helmet certification facility. None of the soft foam helmets we tested passed any of the helmet safety certification standards. Soft foam helmets fail the ASTM Multiple Impact test and they fail the CPSC High Impact test. The problem with soft foam is that the impact energy passes directly through the foam and rattles the headform (brain). The S1 Lifer Helmet passes the ASTM Multiple Impact and the CPSC High Impact tests. Lab results show that the S1 Lifer Helmet with Fusion Foam™ is 5x more protective than regular soft foam helmets.



## HELMET TESTING

3rd Party  
Lab Testing  
Results



SOFT FOAM SKATE HELMET



S1 LIFER HELMET

### Multiple Impact Test (ASTM TEST)

The helmet is dropped to achieve an impact velocity of 4.57 meters per second. (10 mph impact) or (4 ft drop height) The same helmet is tested 3x in the same location. The helmet must reduce the peak acceleration of the impact to under 300 G's per impact.

**FAIL**

800+ G's

**PASS**

Under 300 G's

### High Impact Test (CPSC TEST)

The helmet is dropped to achieve an impact velocity of 6.2 meters per second. (14 mph impact) or (7 ft drop height) The same helmet is tested 4x in different locations. The helmet must reduce the peak acceleration of the impact to under 300 G's per impact.

**FAIL**

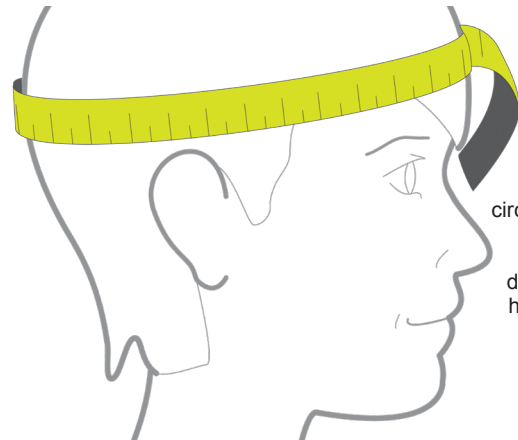
950+ G's

**PASS**

Under 300 G's

# LIFER SIZING OVERVIEW

The S1 Lifer Helmet is available in 3 different shell sizes. You can adjust the sizing of each shell by using thicker or thinner sizing liners. The sizing liners are color coded by thickness.



## HOW TO MEASURE YOUR HEAD

Use a soft tape measure or improvised cord to determine the circumference of your head then use the reference guide to determine what size helmet fits perfectly.

### S1 MINI LIFER



MINI LIFER  
(red clip)

**Fits 18.5" - 20.5"**



S1 MINI LIFER  
Size: X-Small (Grey)  
Fits heads: 18.5"



S1 MINI LIFER  
Size: Small (Red)  
Fits heads: 19"



S1 MINI LIFER  
Size: Medium (Beige)  
Fits heads: 19.5"



S1 MINI LIFER  
Size: Large (Black)  
Fits heads: 20"



S1 MINI LIFER  
Size: X-Large (Green)  
Fits heads: 20.5"

### S1 LIFER



LIFER  
(black clip)

**Fits 20.5" - 23.5"**



S1 LIFER HELMET  
Size: X-Small (Grey)  
Fits heads: 20.5"



S1 LIFER HELMET  
Size: Small (Red)  
Fits heads: 21"



S1 LIFER HELMET  
Size: Medium (Beige)  
Fits heads: 21.5"



S1 LIFER HELMET  
Size: Large (Black)  
Fits heads: 22"



S1 LIFER HELMET  
Size: X-Large (Green)  
Fits heads: 22.5"



S1 LIFER HELMET  
Size: 2X-Large (Blue)  
Fits heads: 23"



S1 LIFER HELMET  
Size: 3X-Large (Purple)  
Fits heads: 23.5"

### S1 MEGA LIFER



MEGA LIFER  
(grey clip)

**Fits 23" - 25.5"**



S1 MEGA LIFER  
Size: Small (Red)  
Fits heads: 23"



S1 MEGA LIFER  
Size: Medium (Beige)  
Fits heads: 23.5"



S1 MEGA LIFER  
Size: Large (Black)  
Fits heads: 24"



S1 MEGA LIFER  
Size: X-Large (Green)  
Fits heads: 24.5"



S1 MEGA LIFER  
Size: 2X-Large (Blue)  
Fits heads: 25"



S1 MEGA LIFER  
Size: 3X-Large (Purple)  
Fits heads: 25.5"

# LIFER SIZING LINERS

The Lifer, Mini Lifer, Mega Lifer, Retro Lifer, Lifer Visor and Lifer Full Face all come equipped with our interchangeable Standard Lifer sizing liners. All of our Lifer sizing liners are compatible with every S1 helmet style and are sized up and down by thinning and thickening the liners to size.

We offer optional upgraded sizing liners sold separately with our Standard Terry Cloth and Wide Terry Cloth sizing liners which provide ultra-sweat absorption, improved durability and are hand washable.

## Standard Liners

Size: XS, S, M, L, XL, XXL, XXXL



## Wide Terry Cloth Liners

Size: XS, S, M, L, XL, XXL, XXXL



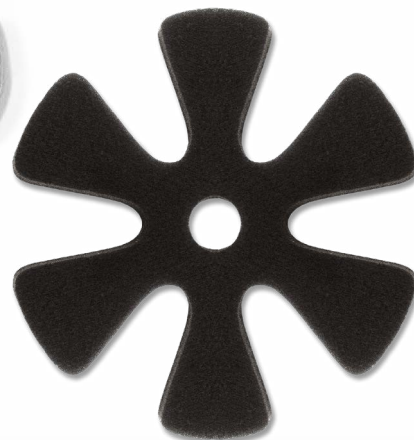
## Terry Cloth Liners

Size: XS, S, M, L, XL, XXL, XXXL



## Top Pads

The Lifer, Mini Lifer, Mega Lifer, Retro Lifer and Lifer Fullface come with a 4mm top pad installed. A 2mm top pad can be used for a deeper fit or an 8mm top pad for a shallow fit.



## S1 Lifer Velcro Kit

Includes 12 pieces of male Velcro.





# ANATOMY OF THE LIFER HELMET

The S1 Lifer Helmet is one of the best fitting and safest helmets for Skateboarding, Longboarding, BMX, Scootering, Roller Skating and Roller Derby. The S1 Lifer Helmet uses a specially formulated EPS Fusion Foam™ which allows it to protect your head from multiple low force impacts as well as single high impacts. The S1 Lifer Helmet is a certified "Multi-Impact" and a certified "High Impact" helmet and is up to 5x more protective than the soft foam non-certified helmets. The S1 Lifer Helmet is a break through design combining the added safety of a CPSC and ASTM certified helmet with the comfort and fit of a non-certified helmet. The S1 Lifer Helmet is the best fitting High Impact and Multiple Impact helmet on the market.

features  
**FUSION  
FOAM**  
inside



- Specially Formulated EPS Fusion Foam™
- Certified Multi-Impact (ASTM)
- Certified High Impact (CPSC)
- High Impact ABS Outer Shell
- 5x More Protective Than Regular Soft Foam Helmets
- Deep Fit Design

• 3 Different Shell Sizes:  
MINI LIFER (18.5" - 20.5")  
LIFER (20.5" - 23.5")  
MEGA LIFER (23" - 25.5")

**S1 LIFER**  
Shown in Black Matte. Size X-Large (22.5")

# S1 LIFER COLOR OPTIONS



Watermelon \*



Bright Purple Gloss \*\*



Black Matte W/ Grey Straps \*



Lagoon Gloss \*\*



White Gloss W/ Checkers \*



White Gloss Glitter \*

features  
**FUSION  
FOAM**  
inside

The colored asterisk indicates whether the color is available in the corresponding helmet shells.

\*MINI LIFER 18.5" - 20.5"

\*LIFER 20.5" - 23.5"

\*MEGA LIFER 23" - 25.5"



# S1 LIFER COLOR OPTIONS



Black Matte W/ Red Straps \*



Black Matte W/ Orange Straps \*



Black Matte W/ Yellow Straps \*



Black Matte W/ Bright Green Straps \*



Black Matte W/ Cyan Straps \*\*



Black Matte W/ Purple Straps \*



Black Matte \*\*\*



Black Gloss \*\*\*



# S1 LIFER COLOR OPTIONS



Dark Grey Matte \*\*



Cool Grey Matte \*



Light Grey Matte \*\*



White Gloss \*\*\*



Maroon Matte \*



Scarlet Red Gloss \*\*\*



Bright Red Gloss \*\*



Hot Pink Gloss \*\*

# S1 LIFER COLOR OPTIONS



Hot Pink Matte \*



Orange Matte \*



Yellow Matte \*



Bright Green Matte \*\*



Kelly Green Matte \*



Dark Green Matte \*\*



Cyan Matte \*\*



Navy Matte \*\*\*

# S1 LIFER COLOR OPTIONS



Bright Purple Matte \*



Purple Matte \*\*\*



Black Gloss Glitter \*\*



Silver Gloss Glitter \*\*\*



Gold Gloss Glitter \*\*



Gold Mirror \*



White Gloss W/ Black Stripes \*



The colored asterisk indicates whether the color is available in the corresponding helmet shells.

\*MINI LIFER 18.5" - 20.5"

\*LIFER 20.5" - 23.5"

\*MEGA LIFER 23" - 25.5"



# S1 LIFER COLLABORATIONS

features  
**FUSION  
FOAM**  
inside



Cult Retro Black Matte \*



Moxi Leopard Print Gloss \*\*



Pink Helmet Posse Black Matte W/ Pink Strap \*\*



Pink Helmet Posse Hot Pink Matte \*\*



LIT Black Matte W/ Blue Strap \*

# S1 LIFER COLLABORATIONS



Gavin Botgter Black Matte W/ White Stripes \*\*



Keeping Vert Dead Black Matte W/ Grey Strap \*



Lonny Hiramoto Black Gloss \*



Misfits Black Matte \*

The colored asterisk indicates whether the color is available in the corresponding helmet shells.

**\*MINI LIFER 18.5" - 20.5"**

**\*LIFER 20.5" - 23.5"**

**\*RETRO LIFER 20.5" - 23.5"**

# ANATOMY OF THE S1 LIFER VISOR

The S1 Lifer Visor Helmet is the exact fit of the standard S1 Lifer Helmet with a modified outer shell that comes equipped with mounting hardware to mount a visor. The S1 Lifer Visor Helmet uses a specially formulated EPS Fusion Foam™ which allows it to protect your head from multiple low force impacts as well as single high impacts. The S1 Lifer Visor Helmet is a certified "Multi-Impact" and a certified "High Impact" helmet and is up to 5x more protective than the soft foam non-certified helmets. The S1 Lifer Visor Helmet is ideal for people who play roller derby or anyone who would like the added feature of an attached visor for eye and face protection from either the sun or contact to the face. Each S1 Lifer Visor Helmet comes with either an iridium, tint or clear visor, a carrying bag, mounting hardware, a micro fiber cloth and three top pads in varying thickness's to affect how deep or shallow you want the helmet to sit on your head. The S1 Lifer Visor Helmet is truly next level protection for contact sports.

features  
**FUSION  
FOAM**  
inside



- Specially Formulated EPS Fusion Foam™
- Certified High Impact (CPSC) And Multi-Impact (ASTM)
- 5x More Protective Than Regular Soft Foam Helmets
- Anti-Scratch Coating On The Outside Of The Visor
- High Impact Polycarbonate Visor To Prevent Shattering On Impact
- Anti-Fog Coating On Inside Of Visor To Help Prevent Fogging
- Optically Correct Lens
- Patented "Cover Catcher"
- In Mold Mounting Hardware
- Patented Rubber Safety Screw Covers
- High Impact ABS Outer Shell
- Patent # 62/375.861

**S1 LIFER VISOR** (20.5" - 23.5")  
Shown in Black Matte W/ Iridium Visor. Size 3X-Large (23.5")



# S1 LIFER VISOR COLOR OPTIONS



Black Gloss W/ Iridium Visor



Black Matte W/ Clear Visor



Scarlet Red Gloss W/ Iridium Visor



White Gloss W/ Clear Visor



Purple Matte W/ Clear Visor



Black Gloss Glitter W/ Iridium Visor



Silver Gloss Glitter W/ Clear Visor



Gold Gloss Glitter W/ Iridium Visor

# ANATOMY OF THE S1 RETRO LIFER

The S1 Retro Lifer Helmet is the exact fit of the standard S1 Lifer Helmet but with an expanded outer shell that extends down over the ears giving it added face protection and a retro moto helmet look. The S1 Retro Lifer Helmet uses a specially formulated EPS Fusion Foam™ which allows it to protect your head from multiple low force impacts as well as single high impacts. The S1 Retro Lifer Helmet is a certified "Multi-Impact" and a certified "High Impact™" helmet and is up to 5x more protective than the soft foam non-certified helmets. The S1 Retro Lifer helmet is a break through design combining the added safety of a CPSC and ASTM certified helmet with the comfort and fit of a non-certified helmet. The S1 Retro Lifer Helmet is the best fitting High impact and Multiple Impact helmet on the market.



- Specially Formulated EPS Fusion Foam™
- Certified Multi-Impact (ASTM)
- Certified High Impact (CPSC)
- High Impact ABS Outer Shell That Covers Down Over Your Ears
- 5x More Protective Than Regular Soft Foam Helmets
- Deep Fit Design
- Lightweight Construction
- Sweat Absorbing Sizing Liners
- Fits Low On The Dome

Comes with 20mm cheek padding, optional 15mm cheek padding for additional room or 25mm for a tighter fit.



20mm (standard)

15mm (optional)

25mm (optional)

**S1 RETRO LIFER (20.5" - 23.5")**  
Shown in Black Matte. Size 2X-Large (23")

# S1 RETRO LIFER COLOR OPTIONS



Black Matte



Black Gloss



Black Matte W/ Black Gloss Stripe



White Gloss



Red Gloss



Neon Pink Matte



Lagoon Gloss



Cyan Matte



Bright Purple Matte



Purple Matte



Black Gloss Glitter



Gold Gloss Glitter



Silver Gloss Glitter



White Matte W/ Black Matte Stripe

Available in 7 different sizes for a perfect fit.

RETRO LIFER 20.5" - 23.5"



FUSION  
FOAM  
PRO



# ANATOMY OF THE S1 LIFER FULLFACE

The S1 Lifer Fullface Helmet is the exact fit of the standard S1 Lifer Helmet but with a fully extended outer shell that covers the entire face. The S1 Lifer Fullface Helmet uses a specially formulated EPS Fusion Foam™ which allows it to protect your head from multiple low force impacts as well as single high impacts. The S1 Lifer Fullface Helmet is a certified "Multi-Impact" and a certified "High Impact"™ helmet and is up to 5x more protective than the soft foam non-certified helmets. The S1 Lifer Fullface Helmet is a break through design combining the added safety of a CPSC and ASTM certified helmet with the comfort and fit of a non-certified helmet. The S1 Lifer Fullface Helmet comes with 3 different size cheek pads for the perfect fit as well as your choice of 2 different visors and a helmet bag for protection of your helmet off the hill. The S1 Lifer Fullface Helmet is the best fitting High Impact and Multiple Impact helmet on the market and is ideal for people who downhill skate, long board or E-Skate and need a helmet with full face protection.



- Specially Formulated EPS Fusion Foam™
- Certified Multi-Impact (ASTM)
- Certified High Impact (CPSC)
- 5x More Protective Than Regular Soft Foam Helmets
- Deep Fit Design
- 4 Visor Lens Options
- Easy On Off Visor Mounting
- Safety Ear Holes



Includes Small, Large and X-Large Cheek Pads.

#### Replacement And Optional Cheek Pad Sizes:

- X-Small (35mm)
- Small (30mm)
- Medium (25mm)
- Large (20mm)
- X-Large (15mm)

**S1 LIFER FULLFACE** (20.5" - 23.5")  
Shown in Black Matte W/ Tint Visor Size Small (21")

# S1 LIFER FULLFACE COLOR OPTIONS



Black Gloss W/ Clear Visor



Black Gloss Glitter W/ Tint Visor



Black Matte W/ Mirror Visor



Silver Gloss Glitter W/ Clear Visor



Bright Red Gloss W/ Mirror Visor



Side



Front

Available in 7 different sizes for a perfect fit.

**LIFER FULL FACE 20.5" - 23.5"**

The Lifer Full Face Helmet was hand crafted by our design crew and wear tested by our team resulting in a truly unique and distinctive custom full face helmet that is unrivaled by any other product on the market. Our innovative and clean design features a wide opening for superior peripheral and front visibility with a sleek, light weight and aerodynamic profile to maximize wind resistance.

The Lifer Full Face Helmet fits just like our Standard Lifer Helmet and has a removable Visor with tilt mobility which is mounted to allow proper air flow to prevent visor fogging. The Lifer Full Face Helmet also features a shorter front profile to help prevent excessive head whip on impact.

# ANATOMY OF THE S1 PRO KNEE PAD

The S1 Pro Knee Pad is thoughtfully designed with comfort, durability, stability and function in mind. We took great care in the design and development of this product and are very excited to bring our vision to reality. Four years in development and thousands of hours of wear testing we are very proud to introduce the S1 Pro Knee Pad.



- **Military Grade Ballistic Nylon For Durability**

- **High Abrasion Flat Cap For Controlled / Stable Slides**

- **Triple Stitched Seams To Prevent Blow Outs**

- **Perfect Length Locking Adjustment Straps**

- **Articulated Butterfly Back Flaps For Secure Fit And Increased Mobility**

- **Streamlined Pad Design**

## Four Tier Foam System

The inner knee cup mold is streamlined and deep fitting and features a four tiered foam system combining high, medium and low density foams to achieve both shock absorption and comfort on impact.



**S1 PRO KNEE PAD** (X-Small, Small, Medium, Medium/Large, Large, X-Large, 2X-Large, 3X-Large)  
Shown with Black Matte Cap Size Large



# S1 PRO KNEE PAD



8 Different Sizes to Choose From



Black Matte Cap



White Gloss Cap

## S1 PRO KNEE PAD

|              |   |  |
|--------------|---|--|
| X-Small      | Top of the knee 12" - 14" (30.48cm - 35.56cm) | Bottom of the knee 11" - 13" (27.94cm - 33.02cm) |
| Small        | Top of the knee 14" - 15" (35.56cm - 38.11cm) | Bottom of the knee 12" - 13" (30.48cm - 33.02cm) |
| Medium       | Top of the knee 15" - 17" (38.11cm - 43.18cm) | Bottom of the knee 13" - 15" (33.02cm - 38.11cm) |
| Medium/Large | Top of the knee 17" - 18" (43.18cm - 45.72cm) | Bottom of the knee 14" - 15" (35.56cm - 38.11cm) |
| Large        | Top of the knee 18" - 20" (45.72cm - 50.18cm) | Bottom of the knee 15" - 17" (38.14cm - 43.18cm) |
| X-Large      | Top of the knee 20" - 21" (50.18cm - 53.34cm) | Bottom of the knee 16" - 17" (40.64cm - 43.18cm) |
| 2X-Large     | Top of the knee 21" - 23" (53.34cm - 58.42cm) | Bottom of the knee 17" - 18" (43.18cm - 45.72cm) |
| 3X-Large     | Top of the knee 23" - 25" (58.42cm - 63.51cm) | Bottom of the knee 18" - 19" (45.72cm - 48.26cm) |

### S1 Pro Knee Pad Sizing Instructions

Top Measure 4" (10.16cm) above the knee cap center

Bottom Measure 4" (10.16cm) below the knee cap center

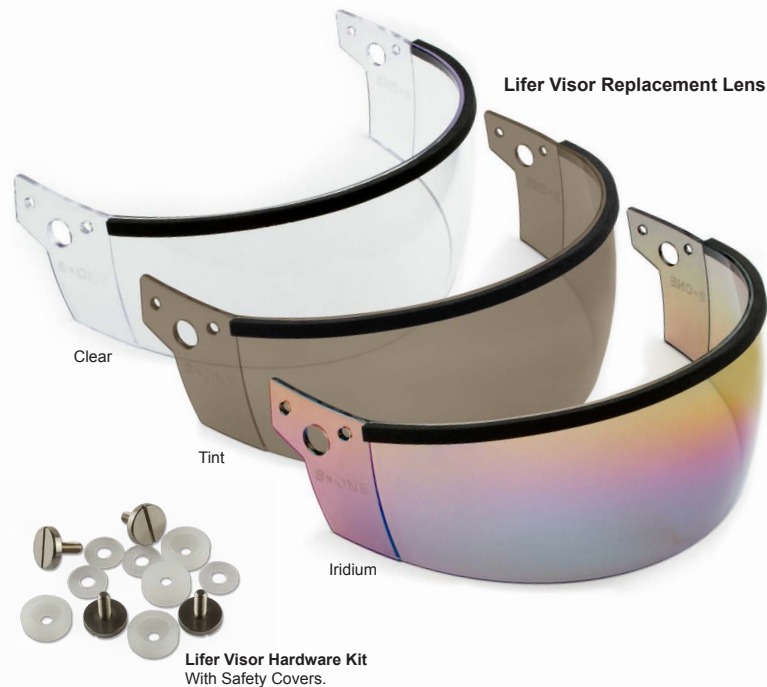
### Options

- White Gloss Caps
- Black Matte Caps

# S1 ACCESSORIES



**S1 STARTER PAD SET** (includes a quality set of knee pads, elbow pads and wrist guards)  
The Starter Pad sets usually fit kids age 3 to 7 years old.



**Lifer Visor Replacement Lens**

Clear

Tint

Iridium

**Lifer Visor Hardware Kit**  
With Safety Covers.

**Replacement Pro Knee Pad Caps**  
Available in Black or White.  
Sold in pairs



Black

White

# S1 ACCESSORIES

## Lifer Fullface Replacement Visors

Clear

Tint

Mirror



Lifer Fullface Hardware Kit



Ladies: Team S1 Flowy Scoop Tank  
Size: XS, S, M, L, XL, XXL



Mens: S1 Pocket Tee  
Size: XS, S, M, L, XL, XXL



S1 Premium Helmet Bag  
One size fits all.



Ladies: Gives Great Helmet Racer Back Tank  
Size: XS, S, M, L, XL, XXL



Mens: Gives Great Helmet Tee  
Size: XS, S, M, L, XL, XXL



S x ONE

TRUSTED BY THE PROS

SINCE 1999

@S1HELMETS  
@S1ROLLERDERBY  
@S1BMX  
@S1SCOOT  
@S1ROLLERSKATE  
@S1PADS

UK DISTRIBUTION  
J & R Sports Ltd,  
Unit 4, Vesty Business Park,  
Vesty Road, Aintree,  
Merseyside, L30 1NY,  
United Kingdom

Tel: +44 (0) 151 523 0500 Email: [info@jandrports.co.uk](mailto:info@jandrports.co.uk)

[WWW.JANDRSPORTS.CO.UK](http://WWW.JANDRSPORTS.CO.UK)